

# Mexico Shipping Point Trends

April 16, 2024

Unless otherwise stated, shipments, crossings or imports are for the weeks ending March 30, and April 06 and 13, 2024, in that order in thousand hundredweight (cwt) or 100,000-pound units. The expected movement is for the period April 14-2, 2024. Prices are for Monday April 15, 2024, compared to Monday April 08, 2024. Unless otherwise stated, sales are F.O.B. Shipping Point Basis (including Delivered Sales, F.O.B. Shipping Point Basis) or port of entry, and extra services are included. Prices represent open (spot) market sales by first handlers on products of generally good quality and condition unless otherwise stated and may include promotional allowances or other incentives. No consideration is given to after-sale adjustments unless otherwise stated. Brokerage fees paid by the shipper are included in the price reported

Source: USDA Market News Service

## AVOCADOS

MEXICO CROSSINGS THROUGH TEXAS 2023 CROP Crossings 617-616-464 --- Movement expected to remain about the same. Trading Organic 60s-70s Fairly Slow at Higher prices, others Fairly Slow. Prices Organic 60s-70s Higher, Conventional 32s-70s Lower, others Generally Unchanged. Cartons 2 layers Hass 32s mostly 44.25-46.25, 36s mostly 43.25-45.25, 40s mostly 43.25-45.25, 48s mostly 43.25-44.25, 60s mostly 43.25-44.25, 70s mostly 36.28-38.25, 84s mostly 28.25-30.25. ORGANIC 48s mostly 52.25-54.25, 60s mostly 50.25-52.25, 70s mostly 43.25-45.25. Extra services included.

## BEANS

MEXICO CROSSINGS THROUGH NOGALES ARIZONA Crossings 31-34-25 --- Movement expected to decrease seasonally. Wide range in price. Trading early moderate, late fairly active. Prices Higher. Handpicked 30-pound cartons 14.95-18.95. Quality variable

## BROCCOLI

MEXICO CROSSINGS THROUGH TEXAS Crossings 120-138\*-73 --- Movement expected to decrease. Trading Moderate. Prices Lower. 20 pound cartons loose Crown Cut Short Trim mostly 13.00-15.00. Quality and condition variable. (\* revised)

## CABBAGE

MEXICO CROSSINGS THROUGH TEXAS Crossings 12-9\*-5 --- Movement expected to decrease. Trading early slow, late moderate. Prices Red higher, Round Green generally unchanged. Round Green 50 pound medium cartons mostly 8.00-9.00, sacks mostly 6.00. Quality generally good. (\* revised)

## CARROTS

MEXICO CROSSINGS THROUGH TEXAS Crossings 94-86\*-55 --- Movement expected to decrease. Trading Moderate. Prices Generally Unchanged. 50 pound sacks loose jumbo mostly 11.00-12.00. Quality and condition variable. (\* revised)

## CILANTRO

MEXICO CROSSINGS THROUGH TEXAS Crossings 38-34\*-23 --- Movement expected about the same. Trading early fairly slow, late moderate. Prices Generally Unchanged. 1 1/9 bushel crates bunched 60s mostly 10.00-12.00. Quality variable. (\* revised)

## CORN

MEXICO CROSSINGS THROUGH NOGALES ARIZONA Crossings 57-51-24 --- Movement expected to decrease seasonally. Trading Moderate. Cartons 4 dozen minimum Yellow and Bi-Color supplies in too few hands to establish a market. Quality variable.

## **CUCUMBERS**

MEXICO CROSSINGS THROUGH NOGALES ARIZONA Crossings 232-267-251 --- (Persian 3-4-6, Long Seedless 29-15-18, Pickles 10-18-10)--- Movement expected about the same. Trading Long Seedless slow, others moderate. Prices Pickles lower, 36s generally unchanged, others higher. 1 1/9 bushel cartons medium mostly 14.95-15.95, fair quality mostly 12.95-13.95, ordinary quality mostly 6.95-8.95; small mostly 8.95-9.95; large mostly 12.95-14.95; cartons 24s mostly 5.95-6.95, 36s mostly 6.95-8.95. Pickles bushel and 40-45-pound plastic containers 200-300s and 300-400s mostly 22.00-24.00, 150-200s mostly 20.00-22.00. GREENHOUSE Long Seedless cartons film wrapped 12s medium and large mostly 2.45-3.95, small 2.45-3.00, irregular size fair quality mostly 5.95-7.95. Quality variable.

MEXICO CROSSINGS THROUGH TEXAS Crossings 110-111-84 --- Movement expected about the same. Trading early fairly slow, late moderate. Prices medium lower, large generally unchanged. 1 1/9 bushel cartons medium mostly 14.95-16.95, fair quality mostly 10.95-12.95, ordinary quality mostly 8.95-9.95, large mostly 18.95-20.95. Quality and condition variable. Many present shipments from prior bookings and/or previous commitments.

## **EGGPLANT**

MEXICO CROSSINGS THROUGH NOGALES ARIZONA Crossings 47-49-40 --- Movement expected to decrease. Supplies 24s heavy. Trading 18s moderate, 24s slow. Prices Slightly Lower. 1 bushel, 1 1/9-bushel, 1 1/6-bushel cartons wrapped 18s mostly 10.95, 24s mostly 8.95; fair quality 18s mostly 5.95-7.95, 24s mostly 4.95-5.95. Quality generally good.

## **HONEYDEWS**

MEXICO CROSSINGS THROUGH NOGALES ARIZONA Crossings 17-9-19 --- Movement expected to increase slightly. Supplies 5s fairly light. Trading 5s moderate, others fairly slow. Prices 2/3 cartons 5s mostly 12.95-13.95, 6s mostly 10.00-11.00, 8s mostly 8.00-9.00. Quality variable.

## **LETTUCE, ICEBERG**

MEXICO CROSSINGS THROUGH TEXAS Crossings 42-34\*-21 --- Movement expected to decrease. Trading early fairly slow, late moderate. Prices Higher. Cartons 24s filmwrapped mostly 12.00-14.00. Quality generally good. (\* revised)

## **LIMES**

MEXICO CROSSINGS THROUGH TEXAS Crossings 216-256\*-155 --- Movement expected to decrease. Supplies 230-250s heavy. Trading 110 - 200s moderate, 230-250s very slow. Prices 175s and 230s slightly lower, 200s and 250s lower, others generally unchanged. 40 pound cartons Seedless 110-150s mostly 32.00-34.00, 175s mostly 30.00-32.00, 200s mostly 26.00-28.00, 230s mostly 24.00-26.00, 250s mostly 20.00-22.00; Fair Appearance 110-150s mostly 28.00-30.00, 175s mostly 26.00-28.00, 200s mostly 24.00, 230s 22.00-24.00, 250s mostly 18.00. Seeded Flats 10-1 pound mesh bags mostly 12.00-14.00; 35-36 pound cartons 400-600s mostly 22.00-24.00. (\* revised)

## **ONIONS, GREEN**

MEXICO CROSSINGS THROUGH SOUTHERN CALIFORNIA AND SAN LUIS ARIZONA Crossings 70-87\*-54 --- Movement expected about the same. Trading early fairly active, late moderate. Prices Lower. Cartons bunched 48s medium mostly 22.45-24.95. ICELESS 2 film bags 24 bunches per bag and 4 film bags 12 bunches per bag mostly 23.55-25.50. ORGANIC cartons bunched 48s medium mostly 29.50-30.50. Quality variable. Most present shipments from prior bookings and/or previous commitments. Most shipments from Mexico transferred to Central California for consolidation and distribution. (\* revised)

## **PEPPERS, BELL**

MEXICO CROSSINGS THROUGH NOGALES ARIZONA Crossings 225-270-198 --- (Green 67-84-70, Red 80-96-68, Yellow 22-21-11, Orange 20 -21-12, Unknown Color 36-48-37)---Movement expected to decrease seasonally. Some sales of 11 Pound Red, Yellow and Orange shipped open with price to be established later. Trading Green and 15 Pound Red moderate, others slow. Prices 15 Pound Red higher, Green lower, others much lower. 1 1/9 bushel cartons Green jumbo and extra large mostly 12.95-14.95, large 10.95-12.95, medium mostly 8.95; irregular size fair quality Green mostly 5.95-7.95, Red mostly 12.95-14.95. 15 pound cartons Red jumbo and extra-large mostly 8.95-10.95, large mostly 8.95. GREENHOUSE 11 pound cartons Red extra-large mostly 5.00-6.00, large mostly 4.00-5.00; Yellow extra-large mostly 6.00-8.00, large mostly 5.00-7.00, Orange extra-large mostly 4.00-5.00, large mostly 4.00. Quality and condition variable.

MEXICO CROSSINGS THROUGH TEXAS Crossings 133-155-116 --- Movement expected about the same. Trading Slow. Prices much lower. GREENHOUSE 11 pound cartons Red jumbo and extra large mostly 6.00-7.00, large mostly 5.00-6.00; Yellow and Orange jumbo and extra large mostly 5.00-6.00. Quality variable.

## **PEPPERS, OTHER**

---PEPPERS, MIXED MINI SWEET TYPES

MEXICO CROSSINGS THROUGH NOGALES ARIZONA Crossings 9-10-6 --- Movement expected to decrease seasonally. Trading Active. Prices much higher. Cartons 12 1-pound Mixed Mini Sweet Types 24.95-26.95. Quality generally good.

---PEPPERS, OTHER

MEXICO CROSSINGS THROUGH NOGALES ARIZONA Crossings 66-76-61 --- Movement expected to decrease seasonally. Trading early active, late very active. Prices Anaheim generally unchanged, others much higher. 1 1/9-bushel cartons per pound Anaheim mostly 1.05-1.10, Jalapeno mostly 1.11, Serrano mostly 1.48-1.51, Poblano mostly 1.15-1.19, Yellow Chile mostly 1.07. Quality generally good.

MEXICO CROSSINGS THROUGH TEXAS Crossings 82-57\*-43 --- Movement expected about the same. Supplies Serrano very light. Trading Serrano, Jalapeno, and Anaheim very active, others active. Prices Serrano much higher, Poblano and Jalapeno higher, others slightly higher. 1 1/9 bushel cartons and crates Anaheim mostly 36.00-38.00, Serrano mostly 62.00-64.00, Jalapeno mostly 50.00-52.00, Poblano 32.00-36.00. 8 pound cartons Habanero Orange mostly 24.00-26.00. Quality and size variable. (\* revised)

## **SQUASH**

---SQUASH, ACORN

MEXICO CROSSINGS THROUGH NOGALES ARIZONA Crossings 3-1-4 --- Movement expected to decrease seasonally. Trading early moderate, late active. Prices much higher. 1 1/9 bushel cartons medium mostly 16.95, large mostly 18.95. Quality variable.

---SQUASH, BUTTERNUT

MEXICO CROSSINGS THROUGH NOGALES ARIZONA Crossings 16-21-14 --- Movement expected to decrease seasonally. Trading Moderate. Prices Slightly Lower. 1 1/9 bushel cartons small mostly 8.95-10.95, medium mostly 10.95-12.95, large mostly 12.95-14.95. Quality variable.

---SQUASH, GREY

MEXICO CROSSINGS THROUGH NOGALES ARIZONA Crossings 23-25-24 --- Movement expected about the same. Trading active at slightly lower prices. Prices Slightly Lower. 4/7 bushel cartons small 10.95-12.95, small-medium mostly 10.95, medium mostly 8.95. Quality variable.

---SQUASH, KABOCHA

MEXICO CROSSINGS THROUGH NOGALES ARIZONA Crossings 14-14-11 --- Movement expected about the same. Trading Moderate. Prices Lower. 1 1/9 bushel cartons medium mostly 8.95-9.95, large mostly 12.95, extra-large mostly 12.95-14.95. Quality variable.

---SQUASH, SPAGHETTI

MEXICO CROSSINGS THROUGH NOGALES ARIZONA Crossings 17-7-6 --- Movement expected to decrease seasonally. Trading Moderate. Prices large slightly higher, medium generally unchanged, small slightly lower. 1 1/9 bushel cartons small mostly 6.95-7.95, medium mostly 8.95-10.95, large mostly 10.95-12.95. Quality variable.

---SQUASH, YELLOW STRAIGHTNECK

MEXICO CROSSINGS THROUGH NOGALES ARIZONA Crossings 4-6-5 --- Movement expected to decrease seasonally. Trading early moderate, late active. Prices much higher. 4/7 bushel cartons small and small-medium 12.95-16.95, medium 10.95-14.95. Quality variable.

---SQUASH, ZUCCHINI

MEXICO CROSSINGS THROUGH NOGALES ARIZONA Crossings 16-17-13 --- Movement expected to decrease seasonally. Trading Moderate. Prices much higher. 4/7 bushel cartons small, small-medium 8.95-10.95, medium mostly 8.95; 1 1/9 bushel cartons medium-large 6.95-8.95. Quality variable.

## **TOMATILLOS**

MEXICO CROSSINGS THROUGH TEXAS Crossings 42-32-26 --- Movement expected about the same. Trading Fairly Active. Prices Higher. 1 1/9 bushel cartons/crates mostly 34.00-36.00. Quality variable.

MEXICO CROSSINGS THROUGH NOGALES ARIZONA Crossings 18-13-8 --- Movement expected to decrease seasonally. Trading Moderate. Prices Generally Unchanged. 1 1/9 bushel cartons/crates mostly 24.00-26.00. Quality variable

## **TOMATOES**

MEXICO CROSSINGS THROUGH TEXAS Crossings 196-177-172 --- Movement expected about the same. Trading early moderate, late active. Prices 2 layer slightly higher, loose 5x5-5x6 sizes slightly higher, 4x4-4x5 sizes generally unchanged. Vine Ripes cartons 2 layer 4x4-5x5s mostly 19.95-20.95, 5x5-5x6s mostly 17.95-18.95; 25 pound cartons loose 4x4-4x5 sizes mostly 20.95, 5x5-5x6 sizes mostly 19.95-20.95. Quality generally good.

MEXICO CROSSINGS THROUGH NOGALES ARIZONA Crossings 111-130-123 --- Movement expected about the same. Trading early moderate, late fairly active. Prices 5x5-5x6s generally unchanged, others slightly higher. Cartons 25-pound cartons loose Vine Ripes 4x4-4x5 sizes mostly 22.95, 5x5-5x6 sizes mostly 20.95; 2-layer Vine Ripes 4x4-4x5s mostly 20.95, 5x5-5x6s mostly 18.95. Quality generally good.

### **TOMATOES, GRAPE**

MEXICO CROSSINGS THROUGH NOGALES ARIZONA Crossings 55-58-44 --- Movement expected about the same. Trading Fairly Slow. Prices Lower. Flats 12 1-pint containers with lids mostly 5.66-6.95, 20-pound cartons loose mostly 10.95-12.95. Quality generally good.

MEXICO CROSSINGS THROUGH TEXAS Crossings 53-52-42 --- Movement expected about the same. Trading early fairly slow, late slow. Prices much lower. Flats 12 1-pint containers with lids medium-large mostly 5.95-6.95; 20 pound cartons loose mostly 10.95-12.95. Quality and condition variable.

### **TOMATOES, PLUM**

MEXICO CROSSINGS THROUGH NOGALES ARIZONA Crossings 215-259-268 --- Movement expected about the same. Trading fairly active at slightly lower prices. 25-pounds cartons loose Roma extra-large mostly 12.95, large mostly 10.95-12.95, medium 9.95-10.95. Quality generally good.

MEXICO CROSSINGS THROUGH TEXAS Crossings 180-172-167 --- Movement expected to increase. Trading early fairly slow, late moderate. Prices medium much lower, others lower. Roma 25 pound cartons loose extra large mostly 13.95-14.95, large mostly 12.95, medium mostly 10.95. Quality and condition variable.

### **WATERMELONS**

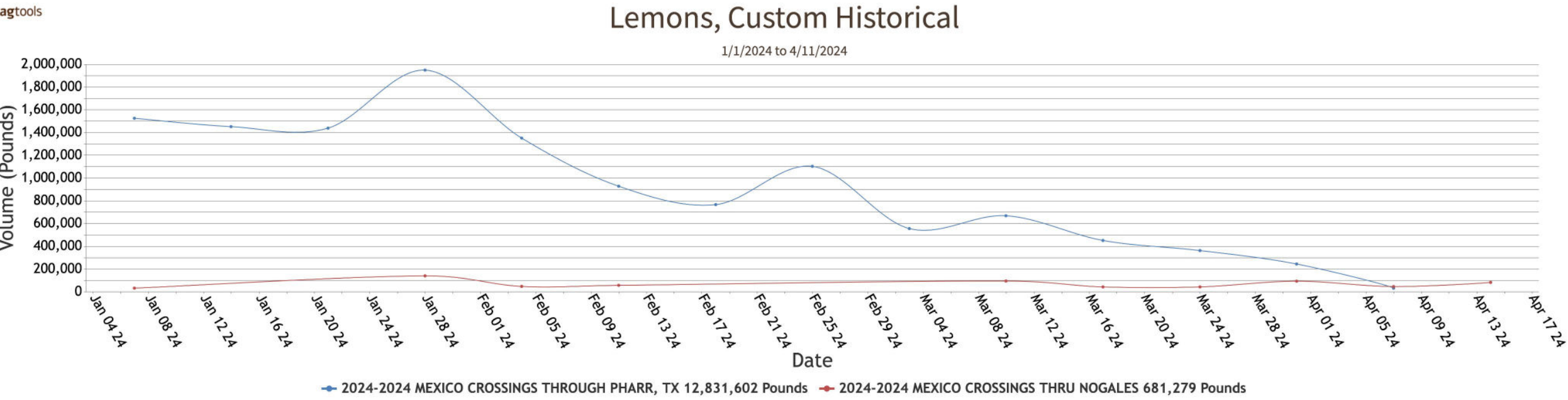
MEXICO CROSSINGS THROUGH NOGALES ARIZONA Crossings 76-116-134 --- (Seedless 53-52-45, Seeded 19-29-46, Miniature 4-35-43)--- Movement expected to increase. Trading Moderate. Prices Red Flesh Seedless Type 24 inch bins approximately 35, 45 and 60 counts mostly 240.00, 75-80s mostly 220.00-225.00; cartons Red Flesh Seedless Type Miniature 6-8s mostly 16.95-18.95, 9s mostly 14.95-16.95. Quality variable.

MEXICO CROSSINGS THROUGH TEXAS Crossings 116-109\*-121 --- Movement expected about the same. Trading early very active, late moderate. Prices much lower. Red Flesh Seedless 24 inch bins approximately 35, 45, and 60 counts mostly 290.00-300.00. Quality and condition variable. (\* revised)

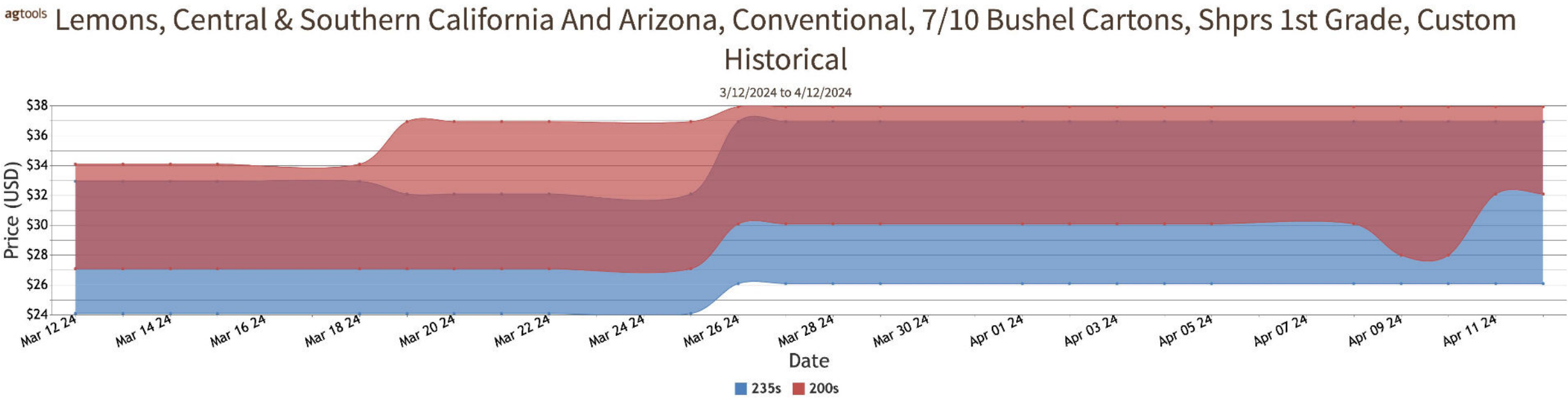


# Lemons

## Volume by Region - 2024



## FOB Price - Last 30 Days



## Weather Forecast

°F

Weather ForecastLemons

Lemons

☆ Save Filters View Filters

×

Current Date

04/15/2024

Location

Martínez de la Torre, Ver., Mexico

Variety

Open Catalog

Harvest

Mode

ForecastComparative

Display

20242 Years3 Years

Type

OverlaySide by Side

Consult

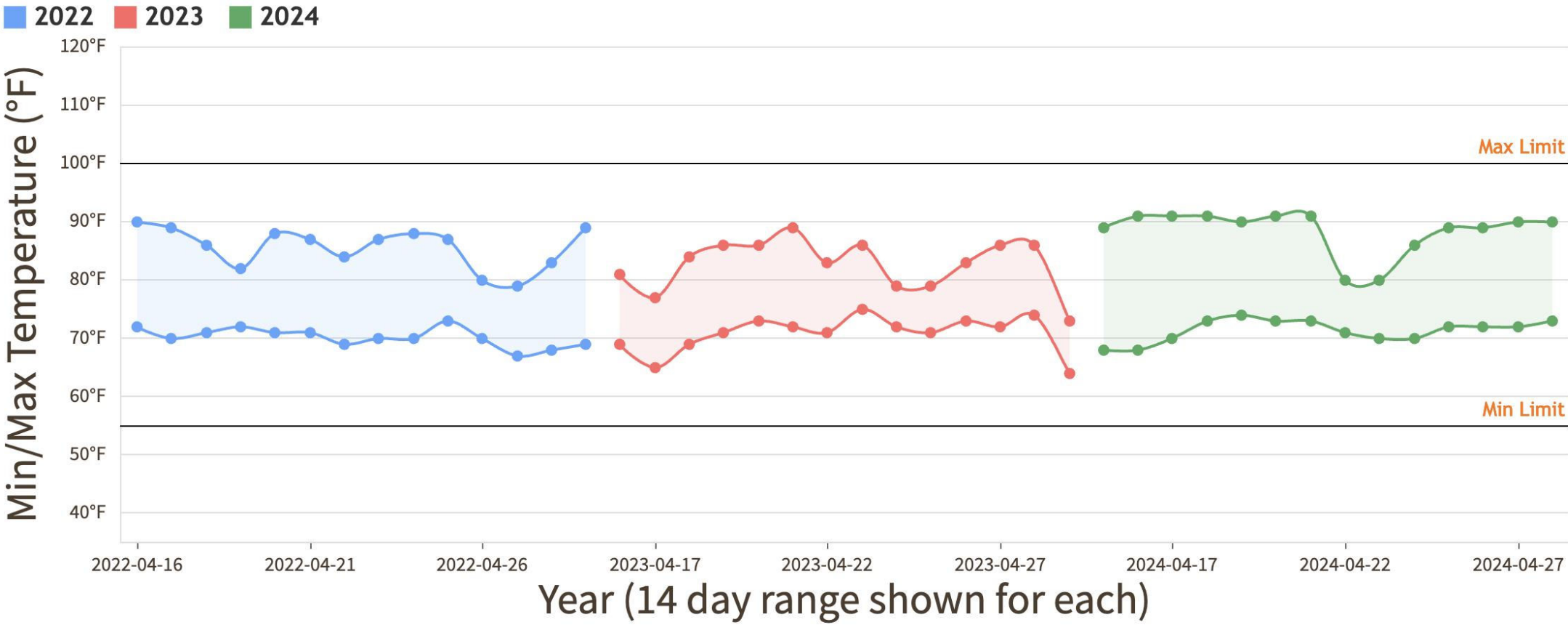
Temperature Range

Too Cold55°F70-90Ideal100°FToo Hot

Humidity Range

Too Dry50%90%Too Humid

## Weather Trends From 2022 - 2024

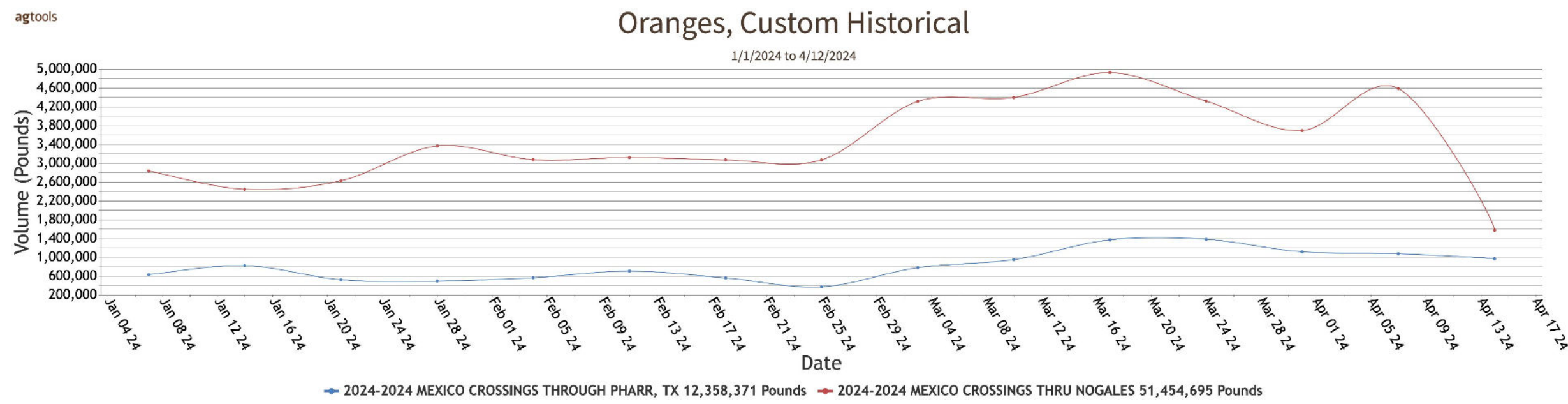




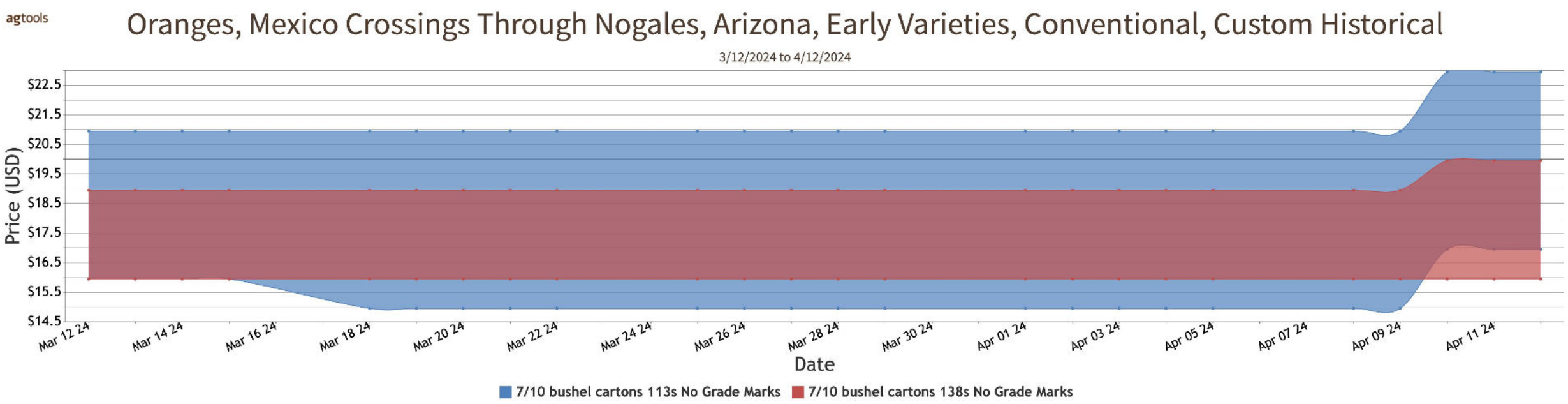


# Oranges


## Volume by Region - 2024



## FOB Price - Last 30 Days



## Weather Forecast



°F

Weather Forecast

Oranges

Oranges

☆ Save Filters View Filters

✕

Current Date

04/15/2024

Location

Álamo Temapache, Ver., Mexico

Variety

Open Catalog

Harvest

Mode

Forecast

Comparative

Display

2024

2 Years

3 Years

Type

Overlay

Side by Side

Consult

Temperature Range

Too Cold

55°F

73-90

Ideal

95°F

Too Hot

Humidity Range

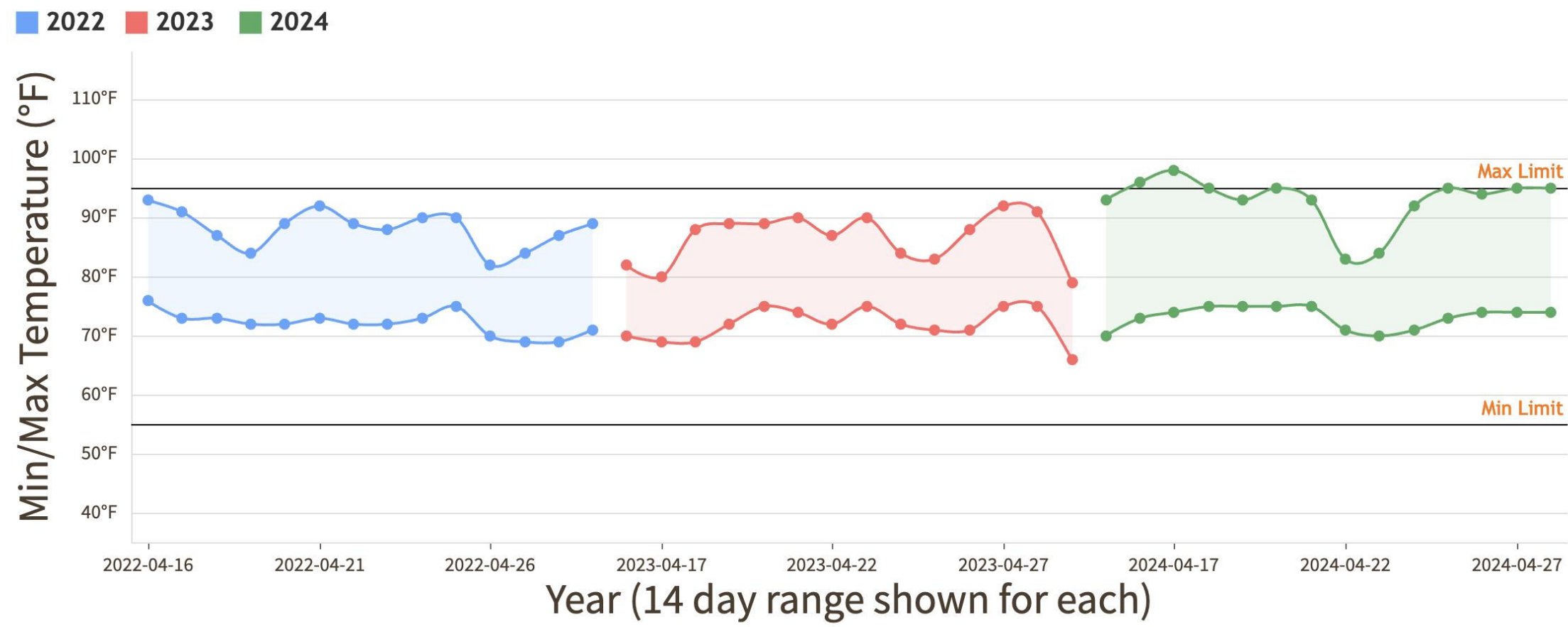
Too Dry

55%

82%

Too Humid

## Weather Trends From 2022 - 2024



# Nogales Crossing Review

Monday, April 15, 2024

Prices represent open (spot) market sales by first handlers on product of generally good quality & condition unless otherwise stated & may include promotional allowances or other incentives. No consideration is given to after-sale adjustments unless otherwise stated. Brokerage fees paid by the shipper are included in the price reported. Price sources are the U.S.D.A. Market News Service and other sources.

----- MOSTLY -----							
	LOW	HIGH	AVERAGE	LOW	HIGH	AVERAGE	PRICE COMMENT
<b>BEANS - MEXICO THRU NOGALES, AZ</b>							
Demand: FAIRLY GOOD. Market: ABOUT STEADY. Comment: Extra services included. Wide range in price.							
ROUND GREEN TYPE * HANDPICKED * 30 lb ctns				14.95	18.95	16.95	
<b>CORN-SWEET - MEXICO THRU NOGALES, AZ</b>							
Demand: MODERATE. Comment: Extra services included.							
BI-COLOR * 4 DZ MIN * ctns							supplies in too few hands to establish a market
YELLOW * 4 DZ MIN * ctns							supplies in too few hands to establish a market
<b>CUCUMBERS - MEXICO THRU NOGALES, AZ</b>							
Demand: LONG SEEDLESS LIGHT, OTHERS MODERATE. Market: MEDIUM, LARGE AND SMALL SLIGHTLY LOWER, OTHERS LOWER. Comment: Extra services included.							
24S * ctns	5.95	6.95	6.45	4.95	8.95	6.95	occasional higher
36S * ctns				6.95	8.95	7.95	occasional higher
LGE * 1 1/9 bu ctns	12.95	14.95	13.95	12.95	16.95	14.95	occasional higher
MED * 1 1/9 bu ctns	14.95	15.95	15.45	13.95	18.95	16.45	occasional higher and lower
MED * FR QUAL * 1 1/9 bu ctns	12.95	13.95	13.45	11.95	16.95	14.45	occasional higher
MED * ORD QUAL * 1 1/9 bu ctns	6.95	8.95	7.95	5.95	9.95	7.95	occasional higher
SML * 1 1/9 bu ctns	8.95	9.95	9.45	7.95	12.95	10.45	
LONG SEEDLESS * IRREG SZ * FR QUAL * ctns flm wrapped * Greenhouse	5.95	7.95	6.95	5.95	9.95	7.95	occasional higher
LONG SEEDLESS * med 12s * ctns flm wrapped * Greenhouse	2.45	3.95	3.20	2.45	4.95	3.70	occasional higher
LONG SEEDLESS * sml 12s * ctns flm wrapped * Greenhouse	2.45	3.00	2.73	2.45	3.95	3.20	occasional higher
LONG SEEDLESS * lge 12s * ctns flm wrapped * Greenhouse	2.45	3.95	3.20	2.45	4.95	3.70	occasional higher
PICKLES * 150-200S * bushel & 40-45 lb plastic containers	20.00	22.00	21.00	18.95	24.00	21.48	occasional higher
PICKLES * 200-300S * bushel & 40-45 lb plastic containers	22.00	24.00	23.00	22.00	26.95	24.48	occasional higher
PICKLES * 300-400S * bushel & 40-45 lb plastic containers	22.00	24.00	23.00	22.00	26.95	24.48	occasional higher
<b>EGGPLANT - MEXICO THRU NOGALES, AZ</b>							
Demand: 18S MODERATE, 24S LIGHT. Market: 18S SLIGHTLY HIGHER, 24S ABOUT STEADY. Comment: Extra services included.							
18S * 1 bu, 1 1/9 bu, 1 1/6 bu ctns wrapped	10.95	10.95	10.95	8.95	12.95	10.95	few 14.95
18S * FR QUAL * 1 bu, 1 1/9 bu, 1 1/6 bu ctns wrapped	5.95	7.95	6.95	5.95	8.95	7.45	
24S * 1 bu, 1 1/9 bu, 1 1/6 bu ctns wrapped	8.95	8.95	8.95	6.95	10.95	8.95	few 12.95
24S * FR QUAL * 1 bu, 1 1/9 bu, 1 1/6 bu ctns wrapped	4.95	5.95	5.45	4.95	6.95	5.95	

# Nogales Crossing Review

Monday, April 15, 2024

Prices represent open (spot) market sales by first handlers on product of generally good quality & condition unless otherwise stated & may include promotional allowances or other incentives. No consideration is given to after-sale adjustments unless otherwise stated. Brokerage fees paid by the shipper are included in the price reported. Price sources are the U.S.D.A. Market News Service and other sources.

----- MOSTLY -----							
	LOW	HIGH	AVERAGE	LOW	HIGH	AVERAGE	PRICE COMMENT
<b>HONEYDEWS - MEXICO THRU NOGALES, AZ</b>							
Demand: 5S MODERATE, 6-8S FAIRLY LIGHT. Market: 5S SLIGHTLY LOWER, OTHERS LOWER. Comment: Extra services included.							
5S * 2/3 cartons	12.95	13.95	13.45	12.00	14.95	13.48	
6S * 2/3 cartons	10.00	11.00	10.50	10.00	12.95	11.48	occasional higher and lower
8S * 2/3 cartons	8.00	9.00	8.50	8.00	10.95	9.48	
<b>MANGOES - MEXICO THRU NOGALES, AZ</b>							
Demand: TOMMY ATKINS 12S MODERATE, OTHERS GOOD. Market: TOMMY ATKINS 12S SLIGHTLY LOWER, ATAULFO 12-16S SLIGHTLY HIGHER, OTHERS ABOUT STEADY. Comment: Wide range in quality and condition. Supplies in few hands.							
ATAULFO * 12S * ctns 1 lyr	10.50	10.50	10.50	9.00	12.50	10.75	occasional higher
ATAULFO * 14S * ctns 1 lyr	10.50	10.50	10.50	9.00	12.50	10.75	
ATAULFO * 16S * ctns 1 lyr	9.00	9.00	9.00	8.25	10.00	9.13	
ATAULFO * 18S * ctns 1 lyr	7.50	8.00	7.75	7.00	9.00	8.00	occasional lower
ATAULFO * 20S * ctns 1 lyr	6.50	7.00	6.75	6.00	8.00	7.00	
ATAULFO * 22S * ctns 1 lyr	6.00	6.00	6.00	5.50	7.50	6.50	
TOMMY ATKINS * 6S * ctns 1 lyr	10.00	10.00	10.00	9.00	10.50	9.75	occasional higher
TOMMY ATKINS * 7S * ctns 1 lyr	10.00	10.00	10.00	9.00	10.50	9.75	occasional higher
TOMMY ATKINS * 8S * ctns 1 lyr	9.50	9.50	9.50	8.50	10.35	9.43	
TOMMY ATKINS * 9S * ctns 1 lyr	8.50	9.00	8.75	8.25	10.00	9.13	
TOMMY ATKINS * 10S * ctns 1 lyr	7.00	7.00	7.00	6.00	8.00	7.00	
TOMMY ATKINS * 12S * ctns 1 lyr	6.00	6.00	6.00	5.50	7.00	6.25	
<b>ORANGES - MEXICO THRU NOGALES, AZ</b>							
Demand: 113-138S FAIRLY GOOD, OTHERS MODERATE. Market: ABOUT STEADY. Comment: Extra services included. Varieties include Hamlin, Valencia.							
EARLY VARIETIES * No Grade Marks * 56S * 7/10 bu ctns							supplies insufficient and in too few hands to establish a market.
EARLY VARIETIES * No Grade Marks * 72S * 7/10 bu ctns							supplies insufficient and in too few hands to establish a market.
EARLY VARIETIES * No Grade Marks * 88S * 7/10 bu ctns	18.50	19.00	18.75	15.95	21.95	18.95	occasional higher
EARLY VARIETIES * No Grade Marks * 113S * 7/10 bu ctns	19.95	21.95	20.95	16.95	22.95	19.95	occasional higher
EARLY VARIETIES * No Grade Marks * 138S * 7/10 bu ctns	18.95	19.95	19.45	15.95	19.95	17.95	occasional higher



# Nogales Crossing Review

Monday, April 15, 2024

Prices represent open (spot) market sales by first handlers on product of generally good quality & condition unless otherwise stated & may include promotional allowances or other incentives. No consideration is given to after-sale adjustments unless otherwise stated. Brokerage fees paid by the shipper are included in the price reported. Price sources are the U.S.D.A. Market News Service and other sources.

	----- MOSTLY -----						
	LOW	HIGH	AVERAGE	LOW	HIGH	AVERAGE	PRICE COMMENT
<b>PEPPERS, BELL TYPE - MEXICO THRU NOGALES, AZ</b>							
Demand: GREEN AND 15 POUND RED MODERATE, OTHERS LIGHT. Market: GREEN SLIGHTLY LOWER, 15 POUND RED SLIGHTLY HIGHER, OTHERS LOWER. Comment: Extra services included. Wide range in quality and condition. Some sales of 11 Pound Red, Yellow and Orange shipped open with price to be established later.							
GREEN * JBO * 1 1/9 bu ctns	12.95	14.95	13.95	12.95	16.95	14.95	occasional higher and lower
GREEN * exlge * 1 1/9 bu ctns	12.95	14.95	13.95	12.95	16.95	14.95	occasional higher and lower
GREEN * LGE * 1 1/9 bu ctns				10.95	12.95	11.95	occasional higher
GREEN * MED * 1 1/9 bu ctns	8.95	8.95	8.95	7.95	10.95	9.45	occasional higher
GREEN * IRREG SZ * FR QUAL * 1 1/9 bu ctns	5.95	7.95	6.95	5.95	9.95	7.95	occasional higher
ORANGE * exlge * 11 lb ctns * Greenhouse	4.00	5.00	4.50	4.00	7.00	5.50	occasional higher
ORANGE * LGE * 11 lb ctns * Greenhouse	4.00	4.00	4.00	4.00	6.00	5.00	occasional higher
RED * JBO * 15 lb cartons	8.95	10.95	9.95	6.95	10.95	8.95	occasional higher
RED * exlge * 11 lb ctns * Greenhouse	5.00	6.00	5.50	4.00	8.00	6.00	occasional higher
RED * exlge * 15 lb cartons	8.95	10.95	9.95	6.95	10.95	8.95	occasional higher
RED * LGE * 11 lb ctns * Greenhouse	4.00	5.00	4.50	4.00	8.00	6.00	occasional higher
RED * LGE * 15 lb cartons	8.95	8.95	8.95	6.95	10.95	8.95	
RED * IRREG SZ * FR QUAL * 1 1/9 bu ctns	12.95	14.95	13.95	10.95	14.95	12.95	occasional higher
YELLOW * exlge * 11 lb ctns * Greenhouse	6.00	8.00	7.00	6.00	9.00	7.50	occasional higher
YELLOW * LGE * 11 lb ctns * Greenhouse	5.00	7.00	6.00	5.00	8.00	6.50	occasional higher

## PEPPERS, OTHER - MEXICO THRU NOGALES, AZ

Demand: MINI SWEETS GOOD, OTHERS VERY GOOD. Market: MINI SWEETS SLIGHTLY HIGHER, SERRANO MUCH HIGHER, OTHERS HIGHER. Comment: Extra services included.

ANAHEIM * 1 1/9 bu ctns * PER LB	1.05	1.10	1.08	1.05	1.18	1.12	
JALAPENO * 1 1/9 bu ctns * PER LB	1.11	1.11	1.11	1.05	1.16	1.11	occasional higher
MIXED MINI SWEET TYPES * cartons 12 1-lb film bags				24.95	26.95	25.95	
POBLANO * 1 1/9 bu ctns * PER LB	1.15	1.19	1.17	1.10	1.28	1.19	few 1.35
SERRANO * 1 1/9 bu ctns * PER LB	1.48	1.51	1.50	1.42	1.58	1.50	occasional lower
YELLOW CHILE * 1 1/9 bu ctns * PER LB	1.07	1.07	1.07	1.00	1.13	1.07	occasional higher

## SQUASH - MEXICO THRU NOGALES, AZ

Demand: BUTTERNUT, KABOCHA AND ZUCCHINI MODERATE, OTHERS GOOD. Market: ZUCCHINI MEDIUM LOWER, ACORN SLIGHTLY HIGHER, OTHERS ABOUT STEADY. Comment: Extra services included.

ACORN * LGE * 1 1/9 bu ctns	18.95	18.95	18.95	18.95	20.95	19.95	
ACORN * MED * 1 1/9 bu ctns	16.95	16.95	16.95	16.95	18.95	17.95	

# Nogales Crossing Review

Monday, April 15, 2024

Prices represent open (spot) market sales by first handlers on product of generally good quality & condition unless otherwise stated & may include promotional allowances or other incentives. No consideration is given to after-sale adjustments unless otherwise stated. Brokerage fees paid by the shipper are included in the price reported. Price sources are the U.S.D.A. Market News Service and other sources.

	----- MOSTLY -----						
	LOW	HIGH	AVERAGE	LOW	HIGH	AVERAGE	PRICE COMMENT
<b>SQUASH - MEXICO THRU NOGALES, AZ</b>							
Demand: BUTTERNUT, KABOCHA AND ZUCCHINI MODERATE, OTHERS GOOD. Market: ZUCCHINI MEDIUM LOWER, ACORN SLIGHTLY HIGHER, OTHERS ABOUT STEADY. Comment: Extra services included.							
BUTTERNUT * LGE * 1 1/9 bu ctns	12.95	14.95	13.95	12.95	16.95	14.95	
BUTTERNUT * MED * 1 1/9 bu ctns	10.95	12.95	11.95	10.95	14.95	12.95	
BUTTERNUT * SML * 1 1/9 bu ctns	8.95	10.95	9.95	8.95	12.95	10.95	
GREY * MED * 4/7 bu ctns	8.95	8.95	8.95	6.95	10.95	8.95	
GREY * SML-MED * 4/7 bu ctns	10.95	10.95	10.95	8.95	12.95	10.95	
GREY * SML * 4/7 bu ctns				10.95	12.95	11.95	occasional higher
KABOCHA * XLGE * 1 1/9 bu ctns	12.95	14.95	13.95	12.95	16.95	14.95	
KABOCHA * LGE * 1 1/9 bu ctns	12.95	12.95	12.95	10.95	14.95	12.95	
KABOCHA * MED * 1 1/9 bu ctns	8.95	9.95	9.45	7.95	10.95	9.45	occasional higher
SPAGHETTI * LGE * 1 1/9 bu ctns	10.95	12.95	11.95	8.95	12.95	10.95	few 14.95 occasional lower
SPAGHETTI * MED * 1 1/9 bu ctns	8.95	10.95	9.95	7.95	12.95	10.45	occasional higher and lower
SPAGHETTI * SML * 1 1/9 bu ctns	6.95	7.95	7.45	5.95	8.95	7.45	occasional higher
YELLOW STRAIGHTNECK * MED * 4/7 bu ctns				10.95	14.95	12.95	occasional higher
YELLOW STRAIGHTNECK * SML-MED * 4/7 bu ctns				12.95	16.95	14.95	occasional higher
YELLOW STRAIGHTNECK * SML * 4/7 bu ctns				12.95	16.95	14.95	occasional higher
ZUCCHINI * MED-LGE * 1 1/9 bu ctns				6.95	8.95	7.95	occasional higher
ZUCCHINI * MED * 4/7 bu ctns	8.95	8.95	8.95	8.95	10.95	9.95	
ZUCCHINI * SML-MED * 4/7 bu ctns				8.95	10.95	9.95	
ZUCCHINI * SML * 4/7 bu ctns				8.95	10.95	9.95	

## TOMATILLOS - MEXICO THRU NOGALES, AZ

Demand: MODERATE. Market: SLIGHTLY LOWER. Comment: Extra services included.

1 1/9 bu ctns/crts	24.00	26.00	25.00	22.00	28.00	25.00	occasional higher
--------------------	-------	-------	-------	-------	-------	-------	-------------------

## TOMATOES - MEXICO THRU NOGALES, AZ

Demand: FAIRLY GOOD. Market: 4X4-4X5S HIGHER, OTHERS SLIGHTLY HIGHER. Comment: Extra services included.

VINE RIPES * 4X4S * cartons 2 layer	20.95	20.95	20.95	18.95	22.95	20.95	
VINE RIPES * 4X5S * cartons 2 layer	20.95	20.95	20.95	18.95	22.95	20.95	
VINE RIPES * 5X5 SZ * 25 lb ctns lse	20.95	20.95	20.95	18.95	22.95	20.95	occasional higher
VINE RIPES * 5X5S * cartons 2 layer	18.95	18.95	18.95	16.95	20.95	18.95	occasional higher

# Nogales Crossing Review

Monday, April 15, 2024

Prices represent open (spot) market sales by first handlers on product of generally good quality & condition unless otherwise stated & may include promotional allowances or other incentives. No consideration is given to after-sale adjustments unless otherwise stated. Brokerage fees paid by the shipper are included in the price reported. Price sources are the U.S.D.A. Market News Service and other sources.

----- MOSTLY -----							
	LOW	HIGH	AVERAGE	LOW	HIGH	AVERAGE	PRICE COMMENT
<b>TOMATOES - MEXICO THRU NOGALES, AZ</b>							
Demand: FAIRLY GOOD. Market: 4X4-4X5S HIGHER, OTHERS SLIGHTLY HIGHER. Comment: Extra services included.							
VINE RIPES * 5X6 SZ * 25 lb ctns lse	20.95	20.95	20.95	18.95	22.95	20.95	occasional higher
VINE RIPES * 5X6S * cartons 2 layer	18.95	18.95	18.95	16.95	20.95	18.95	occasional higher
VINE RIPES * 4x4 sz * 25 lb ctns lse	22.95	22.95	22.95	19.95	24.95	22.45	occasional higher
VINE RIPES * 4x5 sz * 25 lb ctns lse	22.95	22.95	22.95	19.95	24.95	22.45	occasional higher
<b>TOMATOES, GRAPE TYPE - MEXICO THRU NOGALES, AZ</b>							
Demand: FAIRLY LIGHT. Market: ABOUT STEADY. Comment: Extra services included.							
20 lb ctns loose	10.95	12.95	11.95	10.95	14.95	12.95	
flats 12 1-pint cntnrs w/lids				5.66	6.95	6.31	occasional higher
<b>TOMATOES, PLUM TYPE - MEXICO THRU NOGALES, AZ</b>							
Demand: FAIRLY GOOD. Market: HIGHER. Comment: Extra services included.							
ROMA * exlge * 25 lb ctns lse	12.95	12.95	12.95	10.95	14.95	12.95	
ROMA * LGE * 25 lb ctns lse	10.95	12.95	11.95	10.95	14.95	12.95	
ROMA * MED * 25 lb ctns lse				9.95	10.95	10.45	occasional lower
<b>WATERMELONS - MEXICO THRU NOGALES, AZ</b>							
Demand: MODERATE. Market: MINIATURE ABOUT STEADY, 75-80S SLIGHTLY LOWER, OTHERS MUCH LOWER. Comment: Extra services included.							
RED FLESH SEEDLESS MINIATURE * 6S * ctns	16.95	18.95	17.95	15.95	18.95	17.45	occasional higher
RED FLESH SEEDLESS MINIATURE * 8S * ctns	16.95	18.95	17.95	15.95	18.95	17.45	occasional higher
RED FLESH SEEDLESS MINIATURE * 9S * ctns	14.95	16.95	15.95	13.95	16.95	15.45	occasional higher
RED FLESH SEEDLESS TYPE * approx 45 count * 24 in bns	240.00	240.00	240.00	225.00	301.00	263.00	few 315.00
RED FLESH SEEDLESS TYPE * approx 35 count * 24 in bns	240.00	240.00	240.00	225.00	280.00	252.50	few 301.00
RED FLESH SEEDLESS TYPE * approx 60 count * 24 in bns	240.00	240.00	240.00	225.00	301.00	263.00	few 315.00
RED FLESH SEEDLESS TYPE * 75-80s * 24 in bns	220.00	225.00	222.50	220.00	250.00	235.00	few 275.00

# Nogales Crossing Review

Tuesday, April 16, 2024

Prices represent open (spot) market sales by first handlers on product of generally good quality & condition unless otherwise stated & may include promotional allowances or other incentives. No consideration is given to after-sale adjustments unless otherwise stated. Brokerage fees paid by the shipper are included in the price reported. Price sources are the U.S.D.A. Market News Service and other sources.

----- MOSTLY -----							
	LOW	HIGH	AVERAGE	LOW	HIGH	AVERAGE	PRICE COMMENT
<b>BEANS - MEXICO THRU NOGALES, AZ</b>							
Demand: FAIRLY GOOD. Market: SLIGHTLY HIGHER. Comment: Extra services included.							
ROUND GREEN TYPE * HANDPICKED * 30 lb ctns				16.95	18.95	17.95	occasional higher
<b>CORN-SWEET - MEXICO THRU NOGALES, AZ</b>							
Comment: Extra services included.							
BI-COLOR * 4 DZ MIN * ctns							supplies in too few hands to establish a market
YELLOW * 4 DZ MIN * ctns							supplies in too few hands to establish a market
<b>CUCUMBERS - MEXICO THRU NOGALES, AZ</b>							
Demand: LONG SEEDLESS FAIRLY LIGHT, OTHERS MODERATE. Market: LONG SEEDLESS AND 36S ABOUT STEADY, OTHERS SLIGHTLY HIGHER. Comment: Extra services included.							
24S * ctns				5.95	7.95	6.95	occasional higher and lower
36S * ctns				6.95	8.95	7.95	occasional higher
LGE * 1 1/9 bu ctns				14.95	15.95	15.45	occasional higher and lower
MED * 1 1/9 bu ctns				14.95	16.95	15.95	occasional higher and lower
MED * FR QUAL * 1 1/9 bu ctns				12.95	14.95	13.95	occasional higher and lower
MED * ORD QUAL * 1 1/9 bu ctns				6.95	8.95	7.95	occasional higher and lower
SML * 1 1/9 bu ctns				8.95	10.95	9.95	occasional higher and lower
LONG SEEDLESS * IRREG SZ * FR QUAL * ctns flm wrapped * Greenhouse	5.95	7.95	6.95	5.95	9.95	7.95	occasional higher
LONG SEEDLESS * med 12s * ctns flm wrapped * Greenhouse	2.45	3.95	3.20	2.45	4.95	3.70	occasional higher
LONG SEEDLESS * sml 12s * ctns flm wrapped * Greenhouse	2.45	3.00	2.73	2.45	3.95	3.20	occasional higher
LONG SEEDLESS * lge 12s * ctns flm wrapped * Greenhouse	2.45	3.95	3.20	2.45	4.95	3.70	occasional higher
PICKLES * 150-200S * bushel & 40-45 lb plastic containers	22.00	22.00	22.00	18.95	24.00	21.48	occasional higher
PICKLES * 200-300S * bushel & 40-45 lb plastic containers	24.00	24.00	24.00	22.00	26.00	24.00	occasional higher
PICKLES * 300-400S * bushel & 40-45 lb plastic containers	24.00	24.00	24.00	22.00	26.00	24.00	occasional higher
<b>EGGPLANT - MEXICO THRU NOGALES, AZ</b>							
Demand: 18S MODERATE, 24S LIGHT. Market: SLIGHTLY LOWER. Comment: Extra services included.							
18S * 1 bu, 1 1/9 bu, 1 1/6 bu ctns wrapped	8.95	10.95	9.95	8.95	12.95	10.95	occasional higher and lower
18S * FR QUAL * 1 bu, 1 1/9 bu, 1 1/6 bu ctns wrapped	5.95	7.95	6.95	5.95	8.95	7.45	
24S * 1 bu, 1 1/9 bu, 1 1/6 bu ctns wrapped	7.95	8.95	8.45	6.95	10.95	8.95	occasional higher
24S * FR QUAL * 1 bu, 1 1/9 bu, 1 1/6 bu ctns wrapped	4.95	5.95	5.45	4.95	6.95	5.95	

# Nogales Crossing Review

Tuesday, April 16, 2024

Prices represent open (spot) market sales by first handlers on product of generally good quality & condition unless otherwise stated & may include promotional allowances or other incentives. No consideration is given to after-sale adjustments unless otherwise stated. Brokerage fees paid by the shipper are included in the price reported. Price sources are the U.S.D.A. Market News Service and other sources.

----- MOSTLY -----							
	LOW	HIGH	AVERAGE	LOW	HIGH	AVERAGE	PRICE COMMENT
<b>HONEYDEWS - MEXICO THRU NOGALES, AZ</b>							
Demand: FAIRLY LIGHT. Market: LOWER. Comment: Extra services included.							
5S * 2/3 cartons	10.00	11.00	10.50	10.00	12.00	11.00	one label 14.95
6S * 2/3 cartons	8.00	9.00	8.50	8.00	10.00	9.00	one label 10.95
8S * 2/3 cartons				7.00	8.00	7.50	one label 8.95 occasional lower
<b>MANGOES - MEXICO THRU NOGALES, AZ</b>							
Demand: ATAULFO 22S AND TOMMY ATKINS 12S MODERATE, OTHERS VERY GOOD. Market: ATAULFO 22S AND TOMMY ATKINS 12S SLIGHTLY LOWER, OTHERS ABOUT STEADY. Comment: Wide range in quality and condition. Supplies in very few hands. Most present shipments from prior bookings and/or previous commitments.							
ATAULFO * 12S * ctns 1 lyr							supplies insufficient and in too few hands to establish a market
ATAULFO * 14S * ctns 1 lyr							supplies insufficient and in too few hands to establish a market
ATAULFO * 16S * ctns 1 lyr							supplies insufficient and in too few hands to establish a market
ATAULFO * 18S * ctns 1 lyr	7.50	8.00	7.75	7.00	9.00	8.00	occasional lower
ATAULFO * 20S * ctns 1 lyr	6.50	7.00	6.75	6.00	8.00	7.00	
ATAULFO * 22S * ctns 1 lyr	5.50	6.00	5.75	5.50	7.50	6.50	
TOMMY ATKINS * 6S * ctns 1 lyr							supplies insufficient and in too few hands to establish a market
TOMMY ATKINS * 7S * ctns 1 lyr							supplies insufficient and in too few hands to establish a market
TOMMY ATKINS * 8S * ctns 1 lyr							supplies insufficient and in too few hands to establish a market
TOMMY ATKINS * 9S * ctns 1 lyr	8.50	9.00	8.75	8.25	10.00	9.13	
TOMMY ATKINS * 10S * ctns 1 lyr	7.00	7.00	7.00	6.00	8.00	7.00	
TOMMY ATKINS * 12S * ctns 1 lyr	5.50	6.00	5.75	5.50	7.00	6.25	occasional lower
<b>ORANGES - MEXICO THRU NOGALES, AZ</b>							
Demand: 113-138S FAIRLY GOOD, OTHERS MODERATE. Market: ABOUT STEADY. Comment: Extra services included. Varieties include Hamlin, Valencia.							
EARLY VARIETIES * No Grade Marks * 56S * 7/10 bu ctns							supplies insufficient and in too few hands to establish a market.
EARLY VARIETIES * No Grade Marks * 72S * 7/10 bu ctns							supplies insufficient and in too few hands to establish a market.
EARLY VARIETIES * No Grade Marks * 88S * 7/10 bu ctns	18.50	19.00	18.75	15.95	21.95	18.95	occasional higher



# Nogales Crossing Review

Tuesday, April 16, 2024

Prices represent open (spot) market sales by first handlers on product of generally good quality & condition unless otherwise stated & may include promotional allowances or other incentives. No consideration is given to after-sale adjustments unless otherwise stated. Brokerage fees paid by the shipper are included in the price reported. Price sources are the U.S.D.A. Market News Service and other sources.

----- MOSTLY -----							
	LOW	HIGH	AVERAGE	LOW	HIGH	AVERAGE	PRICE COMMENT
<b>ORANGES - MEXICO THRU NOGALES, AZ</b>							
Demand: 113-138S FAIRLY GOOD, OTHERS MODERATE. Market: ABOUT STEADY. Comment: Extra services included. Varieties include Hamlin, Valencia.							
EARLY VARIETIES * No Grade Marks * 113S * 7/10 bu ctns	19.95	21.95	20.95	16.95	22.95	19.95	occasional higher
EARLY VARIETIES * No Grade Marks * 138S * 7/10 bu ctns	18.95	19.95	19.45	15.95	19.95	17.95	occasional higher
<b>PEPPERS, BELL TYPE - MEXICO THRU NOGALES, AZ</b>							
Demand: GREEN AND 15 POUND RED MODERATE, OTHERS LIGHT. Market: GREEN SLIGHTLY HIGHER, OTHERS ABOUT STEADY. Comment: Extra services included. Wide range in quality and condition. Some sales of 11 Pound Red, Yellow and Orange shipped open with price to be established later.							
GREEN * JBO * 1 1/9 bu ctns				12.95	16.95	14.95	occasional higher and lower
GREEN * exlge * 1 1/9 bu ctns				12.95	16.95	14.95	occasional higher and lower
GREEN * LGE * 1 1/9 bu ctns				11.95	13.95	12.95	occasional higher and lower
GREEN * MED * 1 1/9 bu ctns				8.95	10.95	9.95	occasional higher and lower
GREEN * IRREG SZ * FR QUAL * 1 1/9 bu ctns	6.95	8.95	7.95	6.95	10.95	8.95	occasional higher and lower
ORANGE * exlge * 11 lb ctns * Greenhouse	4.00	5.00	4.50	4.00	7.00	5.50	occasional higher
ORANGE * LGE * 11 lb ctns * Greenhouse	4.00	4.00	4.00	4.00	6.00	5.00	occasional higher
RED * JBO * 15 lb cartons	8.95	10.95	9.95	8.95	12.95	10.95	occasional higher and lower
RED * exlge * 11 lb ctns * Greenhouse	5.00	6.00	5.50	4.00	8.00	6.00	occasional higher
RED * exlge * 15 lb cartons	8.95	10.95	9.95	8.95	12.95	10.95	occasional higher and lower
RED * LGE * 11 lb ctns * Greenhouse	4.00	5.00	4.50	4.00	8.00	6.00	occasional higher
RED * LGE * 15 lb cartons	8.95	8.95	8.95	6.95	10.95	8.95	occasional higher
RED * IRREG SZ * FR QUAL * 1 1/9 bu ctns	12.95	14.95	13.95	10.95	14.95	12.95	occasional higher
YELLOW * exlge * 11 lb ctns * Greenhouse	6.00	8.00	7.00	6.00	9.00	7.50	occasional higher
YELLOW * LGE * 11 lb ctns * Greenhouse	5.00	7.00	6.00	5.00	8.00	6.50	occasional higher
<b>PEPPERS, OTHER - MEXICO THRU NOGALES, AZ</b>							
Demand: MINI SWEETS GOOD, OTHERS VERY GOOD. Market: MINI SWEETS HIGHER, SERRANO AND YELLOW CHILE SLIGHTLY HIGHER, OTHERS ABOUT STEADY. Comment: Extra services included.							
ANAHEIM * 1 1/9 bu ctns * PER LB	1.05	1.10	1.08	1.05	1.18	1.12	
JALAPENO * 1 1/9 bu ctns * PER LB	1.11	1.11	1.11	1.05	1.16	1.11	occasional higher and lower
MIXED MINI SWEET TYPES * cartons 12 1-lb film bags				26.95	28.95	27.95	occasional higher
POBLANO * 1 1/9 bu ctns * PER LB	1.15	1.19	1.17	1.10	1.28	1.19	few 1.35 occasional lower
SERRANO * 1 1/9 bu ctns * PER LB	1.53	1.53	1.53	1.42	1.58	1.50	occasional higher and lower
YELLOW CHILE * 1 1/9 bu ctns * PER LB	1.07	1.13	1.10	1.00	1.13	1.07	occasional higher

# Nogales Crossing Review

Tuesday, April 16, 2024

Prices represent open (spot) market sales by first handlers on product of generally good quality & condition unless otherwise stated & may include promotional allowances or other incentives. No consideration is given to after-sale adjustments unless otherwise stated. Brokerage fees paid by the shipper are included in the price reported. Price sources are the U.S.D.A. Market News Service and other sources.

	----- MOSTLY -----						
	LOW	HIGH	AVERAGE	LOW	HIGH	AVERAGE	PRICE COMMENT
<b>SQUASH - MEXICO THRU NOGALES, AZ</b>							
Demand: ZUCCHINI, GREY AND ACORN GOOD, OTHERS MODERATE. Market: ZUCCHINI HIGHER, YELLOW, BUTTERNUT AND KABOCHA SLIGHTLY LOWER, OTHERS ABOUT STEADY. Comment: Extra services included.							
ACORN * LGE * 1 1/9 bu ctns	18.95	18.95	18.95	18.95	20.95	19.95	
ACORN * MED * 1 1/9 bu ctns	16.95	16.95	16.95	16.95	18.95	17.95	
BUTTERNUT * LGE * 1 1/9 bu ctns	12.95	12.95	12.95	10.95	14.95	12.95	
BUTTERNUT * MED * 1 1/9 bu ctns	10.95	10.95	10.95	8.95	12.95	10.95	
BUTTERNUT * SML * 1 1/9 bu ctns	8.95	8.95	8.95	6.95	10.95	8.95	
GREY * MED * 4/7 bu ctns	8.95	8.95	8.95	6.95	10.95	8.95	
GREY * SML-MED * 4/7 bu ctns	10.95	10.95	10.95	8.95	12.95	10.95	
GREY * SML * 4/7 bu ctns				10.95	12.95	11.95	occasional higher
KABOCHA * XLGE * 1 1/9 bu ctns	12.95	12.95	12.95	10.95	14.95	12.95	occasional higher
KABOCHA * LGE * 1 1/9 bu ctns	10.95	11.95	11.45	8.95	14.95	11.95	occasional higher
KABOCHA * MED * 1 1/9 bu ctns	8.95	8.95	8.95	6.95	10.95	8.95	occasional higher
SPAGHETTI * LGE * 1 1/9 bu ctns	10.95	12.95	11.95	8.95	12.95	10.95	occasional higher and lower
SPAGHETTI * MED * 1 1/9 bu ctns	8.95	10.95	9.95	7.95	12.95	10.45	occasional higher and lower
SPAGHETTI * SML * 1 1/9 bu ctns	6.95	7.95	7.45	5.95	8.95	7.45	occasional higher
YELLOW STRAIGHTNECK * MED * 4/7 bu ctns				10.95	12.95	11.95	occasional higher
YELLOW STRAIGHTNECK * SML-MED * 4/7 bu ctns				12.95	14.95	13.95	occasional higher
YELLOW STRAIGHTNECK * SML * 4/7 bu ctns				12.95	14.95	13.95	occasional higher
ZUCCHINI * MED-LGE * 1 1/9 bu ctns				8.95	10.95	9.95	occasional higher
ZUCCHINI * MED * 4/7 bu ctns	10.95	10.95	10.95	10.95	12.95	11.95	
ZUCCHINI * SML-MED * 4/7 bu ctns	10.95	10.95	10.95	10.95	12.95	11.95	
ZUCCHINI * SML * 4/7 bu ctns	10.95	10.95	10.95	10.95	12.95	11.95	

## TOMATILLOS - MEXICO THRU NOGALES, AZ

Demand: MODERATE. Market: ABOUT STEADY. Comment: Extra services included.

1 1/9 bu ctns/crts	24.00	26.00	25.00	22.00	28.00	25.00	occasional higher
--------------------	-------	-------	-------	-------	-------	-------	-------------------

## TOMATOES - MEXICO THRU NOGALES, AZ

Demand: GOOD. Market: 5X6 SIZE AND 5X6S HIGHER, OTHERS SLIGHTLY HIGHER. Comment: Extra services included.

VINE RIPES * 4X4S * cartons 2 layer				20.95	22.95	21.95	occasional higher and lower
VINE RIPES * 4X5S * cartons 2 layer				20.95	22.95	21.95	occasional higher and lower

# Nogales Crossing Review

Tuesday, April 16, 2024

Prices represent open (spot) market sales by first handlers on product of generally good quality & condition unless otherwise stated & may include promotional allowances or other incentives. No consideration is given to after-sale adjustments unless otherwise stated. Brokerage fees paid by the shipper are included in the price reported. Price sources are the U.S.D.A. Market News Service and other sources.

----- MOSTLY -----							
	LOW	HIGH	AVERAGE	LOW	HIGH	AVERAGE	PRICE COMMENT
<b>TOMATOES - MEXICO THRU NOGALES, AZ</b>							
Demand: GOOD. Market: 5X6 SIZE AND 5X6S HIGHER, OTHERS SLIGHTLY HIGHER. Comment: Extra services included.							
VINE RIPES * 5X5 SZ * 25 lb ctns lse				20.95	22.95	21.95	occasional higher and lower
VINE RIPES * 5X5S * cartons 2 layer				18.95	20.95	19.95	occasional higher and lower
VINE RIPES * 5X6 SZ * 25 lb ctns lse	22.95	22.95	22.95	22.95	24.95	23.95	occasional higher and lower
VINE RIPES * 5X6S * cartons 2 layer	20.95	20.95	20.95	18.95	20.95	19.95	occasional higher and lower
VINE RIPES * 4x4 sz * 25 lb ctns lse				22.95	24.95	23.95	occasional higher and lower
VINE RIPES * 4x5 sz * 25 lb ctns lse				22.95	24.95	23.95	occasional higher and lower
<b>TOMATOES, GRAPE TYPE - MEXICO THRU NOGALES, AZ</b>							
Demand: FAIRLY GOOD. Market: PINTS SLIGHTLY HIGHER, LOOSE HIGHER. Comment: Extra services included.							
20 lb ctns loose	12.95	13.95	13.45	11.95	14.95	13.45	
flats 12 1-pint cntnrs w/lids	6.95	6.95	6.95	5.95	7.95	6.95	
<b>TOMATOES, PLUM TYPE - MEXICO THRU NOGALES, AZ</b>							
Demand: GOOD. Market: SLIGHTLY HIGHER. Comment: Extra services included.							
ROMA * exlge * 25 lb ctns lse	12.95	14.95	13.95	12.95	16.95	14.95	
ROMA * LGE * 25 lb ctns lse	12.95	12.95	12.95	10.95	14.95	12.95	occasional higher
ROMA * MED * 25 lb ctns lse	10.95	10.95	10.95	9.95	12.95	11.45	
<b>WATERMELONS - MEXICO THRU NOGALES, AZ</b>							
Demand: MODERATE. Market: MINIATURE SLIGHTLY LOWER, OTHERS LOWER. Comment: Extra services included.							
RED FLESH SEEDLESS MINIATURE * 6S * ctns	16.95	16.95	16.95	14.95	18.95	16.95	occasional higher
RED FLESH SEEDLESS MINIATURE * 8S * ctns	16.95	16.95	16.95	14.95	18.95	16.95	occasional higher
RED FLESH SEEDLESS MINIATURE * 9S * ctns	13.95	14.95	14.45	12.95	16.95	14.95	
RED FLESH SEEDLESS TYPE * 4S * ctns	22.95	22.95	22.95	20.95	24.95	22.95	occasional higher
RED FLESH SEEDLESS TYPE * 5S * ctns	22.95	22.95	22.95	20.95	24.95	22.95	occasional higher
RED FLESH SEEDLESS TYPE * 6S * ctns	22.95	22.95	22.95	20.95	24.95	22.95	occasional higher
RED FLESH SEEDLESS TYPE * approx 45 count * 24 in bns	210.00	225.00	217.50	180.00	260.00	220.00	occasional higher and lower
RED FLESH SEEDLESS TYPE * approx 35 count * 24 in bns	210.00	210.00	210.00	180.00	260.00	220.00	occasional higher and lower
RED FLESH SEEDLESS TYPE * approx 60 count * 24 in bns	210.00	225.00	217.50	180.00	260.00	220.00	occasional higher and lower
RED FLESH SEEDLESS TYPE * 75-80s * 24 in bns							supplies in too few hands to establish a market

# Nogales Crossing Review

Wednesday, April 17, 2024

Prices represent open (spot) market sales by first handlers on product of generally good quality & condition unless otherwise stated & may include promotional allowances or other incentives. No consideration is given to after-sale adjustments unless otherwise stated. Brokerage fees paid by the shipper are included in the price reported. Price sources are the U.S.D.A. Market News Service and other sources.

----- MOSTLY -----							
	LOW	HIGH	AVERAGE	LOW	HIGH	AVERAGE	PRICE COMMENT
<b>BEANS - MEXICO THRU NOGALES, AZ</b>							
Demand: FAIRLY GOOD. Market: ABOUT STEADY. Comment: Extra services included.							
ROUND GREEN TYPE * HANDPICKED * 30 lb ctns	18.00	18.00	18.00	16.95	18.95	17.95	occasional higher
<b>CORN-SWEET - MEXICO THRU NOGALES, AZ</b>							
Comment: Extra services included.							
BI-COLOR * 4 DZ MIN * ctns							supplies in too few hands to establish a market LAST REPORT.
YELLOW * 4 DZ MIN * ctns							supplies in too few hands to establish a market
<b>CUCUMBERS - MEXICO THRU NOGALES, AZ</b>							
Demand: FAIRLY LIGHT. Market: LONG SEEDLESS AND 36S ABOUT STEADY, PICKLES LOWER, OTHERS SLIGHTLY LOWER. Comment: Extra services included.							
24S * ctns				5.95	6.95	6.45	occasional higher and lower
36S * ctns				6.95	8.95	7.95	occasional higher
LGE * 1 1/9 bu ctns				12.95	14.95	13.95	occasional higher
MED * 1 1/9 bu ctns	14.95	14.95	14.95	12.95	16.95	14.95	
MED * FR QUAL * 1 1/9 bu ctns				10.95	12.95	11.95	occasional higher and lower
MED * ORD QUAL * 1 1/9 bu ctns				6.95	7.95	7.45	occasional higher
SML * 1 1/9 bu ctns				8.95	9.95	9.45	occasional higher
LONG SEEDLESS * IRREG SZ * FR QUAL * ctns flm wrapped * Greenhouse				5.95	7.95	6.95	occasional higher
LONG SEEDLESS * med 12s * ctns flm wrapped * Greenhouse	2.45	3.95	3.20	2.45	4.95	3.70	occasional higher
LONG SEEDLESS * sml 12s * ctns flm wrapped * Greenhouse	2.45	3.00	2.73	2.45	3.95	3.20	occasional higher
LONG SEEDLESS * lge 12s * ctns flm wrapped * Greenhouse	2.45	3.95	3.20	2.45	4.95	3.70	occasional higher
PICKLES * 150-200S * bushel & 40-45 lb plastic containers	18.00	20.00	19.00	18.00	22.00	20.00	
PICKLES * 200-300S * bushel & 40-45 lb plastic containers	20.00	22.00	21.00	20.00	24.00	22.00	
PICKLES * 300-400S * bushel & 40-45 lb plastic containers	20.00	22.00	21.00	20.00	24.00	22.00	
<b>EGGPLANT - MEXICO THRU NOGALES, AZ</b>							
Demand: 18S MODERATE, 24S LIGHT. Market: ABOUT STEADY. Comment: Extra services included.							
18S * 1 bu, 1 1/9 bu, 1 1/6 bu ctns wrapped	8.95	10.95	9.95	8.95	12.95	10.95	occasional higher and lower
18S * FR QUAL * 1 bu, 1 1/9 bu, 1 1/6 bu ctns wrapped	5.95	7.95	6.95	5.95	8.95	7.45	
24S * 1 bu, 1 1/9 bu, 1 1/6 bu ctns wrapped	7.95	8.95	8.45	6.95	10.95	8.95	occasional higher
24S * FR QUAL * 1 bu, 1 1/9 bu, 1 1/6 bu ctns wrapped	4.95	5.95	5.45	4.95	6.95	5.95	

# Nogales Crossing Review

Wednesday, April 17, 2024

Prices represent open (spot) market sales by first handlers on product of generally good quality & condition unless otherwise stated & may include promotional allowances or other incentives. No consideration is given to after-sale adjustments unless otherwise stated. Brokerage fees paid by the shipper are included in the price reported. Price sources are the U.S.D.A. Market News Service and other sources.

----- MOSTLY -----							
	LOW	HIGH	AVERAGE	LOW	HIGH	AVERAGE	PRICE COMMENT
<b>HONEYDEWS - MEXICO THRU NOGALES, AZ</b>							
Demand: FAIRLY LIGHT. Market: ABOUT STEADY. Comment: Extra services included.							
5S * 2/3 cartons	10.00	11.00	10.50	10.00	12.00	11.00	occasional higher
6S * 2/3 cartons	8.00	9.00	8.50	8.00	10.00	9.00	occasional higher
8S * 2/3 cartons				7.00	8.00	7.50	occasional higher and lower
<b>MANGOES - MEXICO THRU NOGALES, AZ</b>							
Demand: TOMMY ATKINS 10S MODERATE, OTHERS VERY GOOD. Market: TOMMY ATKINS 9S SLIGHTLY HIGHER, 10S SLIGHTLY LOWER, OTHERS ABOUT STEADY. Comment: Wide range in quality and condition. Supplies in few hands. Most present shipments from prior bookings and/or previous commitments.							
ATAULFO * 12S * ctns 1 lyr							supplies insufficient and in too few hands to establish a market
ATAULFO * 14S * ctns 1 lyr							supplies insufficient and in too few hands to establish a market
ATAULFO * 16S * ctns 1 lyr							supplies insufficient and in too few hands to establish a market
ATAULFO * 18S * ctns 1 lyr	7.50	8.00	7.75	7.00	8.75	7.88	occasional lower
ATAULFO * 20S * ctns 1 lyr	6.50	7.00	6.75	6.00	8.25	7.13	
ATAULFO * 22S * ctns 1 lyr	5.50	6.00	5.75	5.50	7.50	6.50	
TOMMY ATKINS * 6S * ctns 1 lyr							supplies insufficient and in too few hands to establish a market
TOMMY ATKINS * 7S * ctns 1 lyr				10.50	10.50	10.50	
TOMMY ATKINS * 8S * ctns 1 lyr				10.00	10.00	10.00	
TOMMY ATKINS * 9S * ctns 1 lyr				9.00	9.50	9.25	
TOMMY ATKINS * 10S * ctns 1 lyr	6.50	6.50	6.50	6.00	7.25	6.63	
TOMMY ATKINS * 12S * ctns 1 lyr	5.50	6.00	5.75	5.50	7.00	6.25	occasional lower
<b>ORANGES - MEXICO THRU NOGALES, AZ</b>							
Demand: 113-138S FAIRLY GOOD, OTHERS MODERATE. Market: ABOUT STEADY. Comment: Extra services included. Varieties include Hamlin, Valencia.							
EARLY VARIETIES * No Grade Marks * 56S * 7/10 bu ctns							supplies insufficient and in too few hands to establish a market.
EARLY VARIETIES * No Grade Marks * 72S * 7/10 bu ctns							supplies insufficient and in too few hands to establish a market.
EARLY VARIETIES * No Grade Marks * 88S * 7/10 bu ctns	18.50	19.00	18.75	15.95	21.95	18.95	occasional higher
EARLY VARIETIES * No Grade Marks * 113S * 7/10 bu ctns	19.95	21.95	20.95	16.95	22.95	19.95	occasional higher



# Nogales Crossing Review

Wednesday, April 17, 2024

Prices represent open (spot) market sales by first handlers on product of generally good quality & condition unless otherwise stated & may include promotional allowances or other incentives. No consideration is given to after-sale adjustments unless otherwise stated. Brokerage fees paid by the shipper are included in the price reported. Price sources are the U.S.D.A. Market News Service and other sources.

----- MOSTLY -----							
	LOW	HIGH	AVERAGE	LOW	HIGH	AVERAGE	PRICE COMMENT
<b>ORANGES - MEXICO THRU NOGALES, AZ</b>							
Demand: 113-138S FAIRLY GOOD, OTHERS MODERATE. Market: ABOUT STEADY. Comment: Extra services included. Varieties include Hamlin, Valencia.							
EARLY VARIETIES * No Grade Marks * 138S * 7/10 bu ctns	18.95	19.95	19.45	15.95	19.95	17.95	occasional higher
<b>PEPPERS, BELL TYPE - MEXICO THRU NOGALES, AZ</b>							
Demand: GREEN AND 15 POUND RED MODERATE, OTHERS LIGHT. Market: GREEN EXTRA LARGE AND 15 POUND RED LARGE SLIGHTLY HIGHER, OTHERS ABOUT STEADY. Comment: Extra services included. Wide range in quality and condition.							
GREEN * JBO * 1 1/9 bu ctns							supplies insufficient and in too few hands to establish a market
GREEN * exlge * 1 1/9 bu ctns				14.95	16.95	15.95	occasional higher and lower
GREEN * LGE * 1 1/9 bu ctns	12.95	12.95	12.95	10.95	12.95	11.95	occasional higher
GREEN * MED * 1 1/9 bu ctns	8.95	8.95	8.95	8.95	10.95	9.95	occasional higher and lower
GREEN * IRREG SZ * FR QUAL * 1 1/9 bu ctns	6.95	8.95	7.95	6.95	10.95	8.95	occasional higher
ORANGE * exlge * 11 lb ctns * Greenhouse	4.00	5.00	4.50	4.00	7.00	5.50	occasional higher
ORANGE * LGE * 11 lb ctns * Greenhouse	4.00	4.00	4.00	4.00	6.00	5.00	occasional higher
RED * JBO * 15 lb cartons	8.95	10.95	9.95	8.95	12.95	10.95	occasional higher and lower
RED * exlge * 11 lb ctns * Greenhouse	5.00	6.00	5.50	4.00	8.00	6.00	occasional higher
RED * exlge * 15 lb cartons	8.95	10.95	9.95	8.95	12.95	10.95	occasional higher and lower
RED * LGE * 11 lb ctns * Greenhouse	4.00	5.00	4.50	4.00	8.00	6.00	occasional higher
RED * LGE * 15 lb cartons	8.95	10.95	9.95	8.95	12.95	10.95	occasional higher
RED * IRREG SZ * FR QUAL * 1 1/9 bu ctns	10.95	12.95	11.95	10.95	14.95	12.95	occasional higher
YELLOW * exlge * 11 lb ctns * Greenhouse	6.00	8.00	7.00	6.00	9.00	7.50	occasional higher
YELLOW * LGE * 11 lb ctns * Greenhouse	5.00	7.00	6.00	5.00	8.00	6.50	occasional higher
<b>PEPPERS, OTHER - MEXICO THRU NOGALES, AZ</b>							
Demand: MINI SWEETS GOOD, OTHERS VERY GOOD. Market: MINI SWEETS, ANAHEIM AND POBLANO SLIGHTLY HIGHER, OTHERS ABOUT STEADY. Comment: Extra services included.							
ANAHEIM * 1 1/9 bu ctns * PER LB	1.10	1.13	1.12	1.05	1.18	1.12	
JALAPENO * 1 1/9 bu ctns * PER LB	1.11	1.11	1.11	1.05	1.16	1.11	occasional higher and lower
MIXED MINI SWEET TYPES * cartons 12 1-lb film bags	28.95	28.95	28.95	28.95	30.95	29.95	occasional higher
POBLANO * 1 1/9 bu ctns * PER LB	1.19	1.24	1.22	1.10	1.28	1.19	few 1.35 occasional lower
SERRANO * 1 1/9 bu ctns * PER LB	1.53	1.53	1.53	1.42	1.58	1.50	one label 1.85 occasional lower
YELLOW CHILE * 1 1/9 bu ctns * PER LB	1.07	1.13	1.10	1.00	1.13	1.07	occasional higher

# Nogales Crossing Review

Wednesday, April 17, 2024

Prices represent open (spot) market sales by first handlers on product of generally good quality & condition unless otherwise stated & may include promotional allowances or other incentives. No consideration is given to after-sale adjustments unless otherwise stated. Brokerage fees paid by the shipper are included in the price reported. Price sources are the U.S.D.A. Market News Service and other sources.

	----- MOSTLY -----						
	LOW	HIGH	AVERAGE	LOW	HIGH	AVERAGE	PRICE COMMENT
<b>SQUASH - MEXICO THRU NOGALES, AZ</b>							
Demand: ZUCCHINI, YELLOW AND ACORN GOOD, OTHERS MODERATE. Market: YELLOW HIGHER, KABOCHA SLIGHTLY LOWER, OTHERS ABOUT STEADY. Comment: Extra services included.							
ACORN * LGE * 1 1/9 bu ctns	18.95	18.95	18.95	18.95	20.95	19.95	
ACORN * MED * 1 1/9 bu ctns	16.95	16.95	16.95	16.95	18.95	17.95	
BUTTERNUT * LGE * 1 1/9 bu ctns	12.95	12.95	12.95	10.95	14.95	12.95	
BUTTERNUT * MED * 1 1/9 bu ctns	10.95	10.95	10.95	8.95	12.95	10.95	
BUTTERNUT * SML * 1 1/9 bu ctns	8.95	8.95	8.95	6.95	10.95	8.95	
GREY * MED * 4/7 bu ctns	8.95	8.95	8.95	6.95	10.95	8.95	
GREY * SML-MED * 4/7 bu ctns	10.95	10.95	10.95	8.95	12.95	10.95	
GREY * SML * 4/7 bu ctns	10.95	12.95	11.95	10.95	14.95	12.95	
KABOCHA * XLGE * 1 1/9 bu ctns	10.95	12.95	11.95	10.95	14.95	12.95	occasional higher
KABOCHA * LGE * 1 1/9 bu ctns	8.95	10.95	9.95	8.95	12.95	10.95	occasional higher
KABOCHA * MED * 1 1/9 bu ctns	6.95	8.95	7.95	6.95	10.95	8.95	occasional higher
SPAGHETTI * LGE * 1 1/9 bu ctns	10.95	12.95	11.95	8.95	12.95	10.95	occasional higher and lower
SPAGHETTI * MED * 1 1/9 bu ctns	8.95	10.95	9.95	7.95	12.95	10.45	occasional higher and lower
SPAGHETTI * SML * 1 1/9 bu ctns	6.95	7.95	7.45	5.95	8.95	7.45	occasional higher
YELLOW STRAIGHTNECK * MED * 4/7 bu ctns				12.95	14.95	13.95	occasional higher
YELLOW STRAIGHTNECK * SML-MED * 4/7 bu ctns	16.95	16.95	16.95	14.95	18.95	16.95	occasional higher
YELLOW STRAIGHTNECK * SML * 4/7 bu ctns	16.95	16.95	16.95	14.95	18.95	16.95	occasional higher
ZUCCHINI * MED-LGE * 1 1/9 bu ctns				6.95	8.95	7.95	occasional higher
ZUCCHINI * MED * 4/7 bu ctns	10.95	10.95	10.95	10.95	12.95	11.95	
ZUCCHINI * SML-MED * 4/7 bu ctns	10.95	10.95	10.95	10.95	12.95	11.95	
ZUCCHINI * SML * 4/7 bu ctns	10.95	10.95	10.95	10.95	12.95	11.95	

## TOMATILLOS - MEXICO THRU NOGALES, AZ

Demand: MODERATE. Market: SLIGHTLY HIGHER. Comment: Extra services included.

1 1/9 bu ctns/crts	26.00	26.00	26.00	24.00	30.00	27.00	occasional higher and lower
--------------------	-------	-------	-------	-------	-------	-------	-----------------------------

## TOMATOES - MEXICO THRU NOGALES, AZ

Demand: GOOD. Market: 5X6 SIZE AND 5X6S ABOUT STEADY, OTHERS SLIGHTLY HIGHER. Comment: Extra services included.

VINE RIPES * 4X4S * cartons 2 layer	22.95	22.95	22.95	20.95	22.95	21.95	occasional higher
VINE RIPES * 4X5S * cartons 2 layer	22.95	22.95	22.95	20.95	22.95	21.95	occasional higher

# Nogales Crossing Review

Wednesday, April 17, 2024

Prices represent open (spot) market sales by first handlers on product of generally good quality & condition unless otherwise stated & may include promotional allowances or other incentives. No consideration is given to after-sale adjustments unless otherwise stated. Brokerage fees paid by the shipper are included in the price reported. Price sources are the U.S.D.A. Market News Service and other sources.

----- MOSTLY -----							
	LOW	HIGH	AVERAGE	LOW	HIGH	AVERAGE	PRICE COMMENT
<b>TOMATOES - MEXICO THRU NOGALES, AZ</b>							
Demand: GOOD. Market: 5X6 SIZE AND 5X6S ABOUT STEADY, OTHERS SLIGHTLY HIGHER. Comment: Extra services included.							
VINE RIPES * 5X5 SZ * 25 lb ctns lse	22.95	22.95	22.95	20.95	22.95	21.95	occasional higher
VINE RIPES * 5X5S * cartons 2 layer	20.95	20.95	20.95	18.95	20.95	19.95	occasional higher
VINE RIPES * 5X6 SZ * 25 lb ctns lse	22.95	22.95	22.95	20.95	22.95	21.95	occasional higher
VINE RIPES * 5X6S * cartons 2 layer	20.95	20.95	20.95	18.95	20.95	19.95	occasional higher
VINE RIPES * 4x4 sz * 25 lb ctns lse	24.95	24.95	24.95	22.95	24.95	23.95	occasional higher
VINE RIPES * 4x5 sz * 25 lb ctns lse	24.95	24.95	24.95	22.95	24.95	23.95	occasional higher
<b>TOMATOES, GRAPE TYPE - MEXICO THRU NOGALES, AZ</b>							
Demand: FAIRLY GOOD. Market: LOOSE SLIGHTLY HIGHER, PINTS ABOUT STEADY. Comment: Extra services included.							
20 lb ctns loose	12.95	14.95	13.95	11.95	14.95	13.45	
flats 12 1-pint cntnrs w/lids	6.95	6.95	6.95	5.95	7.95	6.95	
<b>TOMATOES, PLUM TYPE - MEXICO THRU NOGALES, AZ</b>							
Demand: GOOD. Market: EXTRA LARGE HIGHER, OTHERS SLIGHTLY HIGHER. Comment: Extra services included.							
ROMA * exlge * 25 lb ctns lse	14.95	16.95	15.95	12.95	16.95	14.95	few 18.95
ROMA * LGE * 25 lb ctns lse	13.95	14.95	14.45	12.95	16.95	14.95	occasional higher
ROMA * MED * 25 lb ctns lse				10.95	12.95	11.95	occasional higher
<b>WATERMELONS - MEXICO THRU NOGALES, AZ</b>							
Demand: MODERATE. Market: MINIATURE 8S ABOUT STEADY, OTHERS SLIGHTLY LOWER. Comment: Extra services included.							
RED FLESH SEEDLESS MINIATURE * 6S * ctns	14.95	15.95	15.45	14.95	17.95	16.45	occasional higher
RED FLESH SEEDLESS MINIATURE * 8S * ctns	16.95	16.95	16.95	14.95	18.95	16.95	occasional higher
RED FLESH SEEDLESS MINIATURE * 9S * ctns	12.95	13.95	13.45	12.95	14.95	13.95	occasional higher
RED FLESH SEEDLESS TYPE * 4S * ctns	20.95	22.95	21.95	20.95	24.95	22.95	
RED FLESH SEEDLESS TYPE * 5S * ctns	20.95	22.95	21.95	20.95	24.95	22.95	
RED FLESH SEEDLESS TYPE * 6S * ctns	20.95	22.95	21.95	20.95	24.95	22.95	
RED FLESH SEEDLESS TYPE * approx 45 count * 24 in bns	198.00	210.00	204.00	180.00	230.00	205.00	occasional higher and lower
RED FLESH SEEDLESS TYPE * approx 35 count * 24 in bns	182.00	198.00	190.00	175.00	220.00	197.50	occasional higher and lower
RED FLESH SEEDLESS TYPE * approx 60 count * 24 in bns	198.00	210.00	204.00	180.00	230.00	205.00	occasional higher and lower
RED FLESH SEEDLESS TYPE * 75-80s * 24 in bns							supplies in too few hands to establish a market

# Nogales Crossing Review

Thursday, April 18, 2024

Prices represent open (spot) market sales by first handlers on product of generally good quality & condition unless otherwise stated & may include promotional allowances or other incentives. No consideration is given to after-sale adjustments unless otherwise stated. Brokerage fees paid by the shipper are included in the price reported. Price sources are the U.S.D.A. Market News Service and other sources.

----- MOSTLY -----							
	LOW	HIGH	AVERAGE	LOW	HIGH	AVERAGE	PRICE COMMENT
<b>BEANS - MEXICO THRU NOGALES, AZ</b>							
Demand: FAIRLY GOOD. Market: SLIGHTLY HIGHER. Comment: Extra services included.							
ROUND GREEN TYPE * HANDPICKED * 30 lb ctns	18.00	18.95	18.48	16.95	18.95	17.95	occasional higher
<b>CUCUMBERS - MEXICO THRU NOGALES, AZ</b>							
Demand: MODERATE. Market: LONG SEEDLESS HIGHER, MEDIUM AND SMALL SLIGHTLY HIGHER, OTHERS ABOUT STEADY. Comment: Extra services included.							
24S * ctns				5.95	6.95	6.45	occasional higher and lower
36S * ctns				6.95	8.95	7.95	occasional higher
LGE * 1 1/9 bu ctns				12.95	14.95	13.95	occasional higher
MED * 1 1/9 bu ctns				14.95	16.95	15.95	
MED * FR QUAL * 1 1/9 bu ctns				10.95	12.95	11.95	occasional higher and lower
MED * ORD QUAL * 1 1/9 bu ctns				6.95	8.95	7.95	occasional higher
SML * 1 1/9 bu ctns				8.95	10.95	9.95	occasional higher and lower
LONG SEEDLESS * IRREG SZ * FR QUAL * ctns flm wrapped * Greenhouse				5.95	7.95	6.95	occasional higher
LONG SEEDLESS * med 12s * ctns flm wrapped * Greenhouse	2.95	4.95	3.95	2.95	5.95	4.45	
LONG SEEDLESS * sml 12s * ctns flm wrapped * Greenhouse	2.95	3.95	3.45	2.95	4.95	3.95	
LONG SEEDLESS * lge 12s * ctns flm wrapped * Greenhouse	2.95	4.95	3.95	2.95	5.95	4.45	
PICKLES * 150-200S * bushel & 40-45 lb plastic containers	18.00	20.00	19.00	18.00	22.00	20.00	
PICKLES * 200-300S * bushel & 40-45 lb plastic containers	20.00	22.00	21.00	20.00	24.00	22.00	
PICKLES * 300-400S * bushel & 40-45 lb plastic containers	20.00	22.00	21.00	20.00	24.00	22.00	
<b>EGGPLANT - MEXICO THRU NOGALES, AZ</b>							
Demand: 18S MODERATE, 24S LIGHT. Market: ABOUT STEADY. Comment: Extra services included.							
18S * 1 bu, 1 1/9 bu, 1 1/6 bu ctns wrapped	8.95	10.95	9.95	7.95	12.95	10.45	occasional higher and lower
18S * FR QUAL * 1 bu, 1 1/9 bu, 1 1/6 bu ctns wrapped	5.95	7.95	6.95	5.95	8.95	7.45	occasional higher
24S * 1 bu, 1 1/9 bu, 1 1/6 bu ctns wrapped	7.95	8.95	8.45	6.95	10.95	8.95	occasional higher and lower
24S * FR QUAL * 1 bu, 1 1/9 bu, 1 1/6 bu ctns wrapped	4.95	5.95	5.45	4.95	7.95	6.45	occasional higher
<b>HONEYDEWS - MEXICO THRU NOGALES, AZ</b>							
Demand: 5S MODERATE, OTHERS FAIRLY LIGHT. Market: ABOUT STEADY. Comment: Extra services included.							
2/3 cartons							
5S * 2/3 cartons	10.00	11.00	10.50	10.00	12.95	11.48	
6S * 2/3 cartons	8.00	9.00	8.50	8.00	10.95	9.48	

# Nogales Crossing Review

Thursday, April 18, 2024

Prices represent open (spot) market sales by first handlers on product of generally good quality & condition unless otherwise stated & may include promotional allowances or other incentives. No consideration is given to after-sale adjustments unless otherwise stated. Brokerage fees paid by the shipper are included in the price reported. Price sources are the U.S.D.A. Market News Service and other sources.

----- MOSTLY -----							
	LOW	HIGH	AVERAGE	LOW	HIGH	AVERAGE	PRICE COMMENT
<b>HONEYDEWS - MEXICO THRU NOGALES, AZ</b>							
Demand: 5S MODERATE, OTHERS FAIRLY LIGHT. Market: ABOUT STEADY. Comment: Extra services included.							
8S * 2/3 cartons	7.00	8.00	7.50	7.00	8.95	7.98	few 9.95 occasional lower
<b>MANGOES - MEXICO THRU NOGALES, AZ</b>							
Demand: TOMMY ATKINS 12S MODERATE, OTHERS VERY GOOD. Market: ABOUT STEADY. Comment: Wide range in quality and condition. Supplies in few hands. Most present shipments from prior bookings and/or previous commitments. Volume includes very light supplies of Haden variety.							
ATAULFO * 12S * ctns 1 lyr							supplies insufficient and in too few hands to establish a market
ATAULFO * 14S * ctns 1 lyr							supplies insufficient and in too few hands to establish a market
ATAULFO * 16S * ctns 1 lyr							supplies insufficient and in too few hands to establish a market
ATAULFO * 18S * ctns 1 lyr	7.50	8.00	7.75	7.00	8.75	7.88	occasional lower
ATAULFO * 20S * ctns 1 lyr	6.50	7.00	6.75	6.00	8.25	7.13	
ATAULFO * 22S * ctns 1 lyr	5.50	6.00	5.75	5.50	7.50	6.50	
TOMMY ATKINS * 6S * ctns 1 lyr							supplies insufficient and in too few hands to establish a market
TOMMY ATKINS * 7S * ctns 1 lyr				10.50	10.50	10.50	
TOMMY ATKINS * 8S * ctns 1 lyr				10.00	10.00	10.00	
TOMMY ATKINS * 9S * ctns 1 lyr				9.00	9.50	9.25	
TOMMY ATKINS * 10S * ctns 1 lyr	6.50	6.50	6.50	6.00	7.25	6.63	
TOMMY ATKINS * 12S * ctns 1 lyr	5.50	6.00	5.75	5.50	7.00	6.25	occasional higher and lower
<b>ORANGES - MEXICO THRU NOGALES, AZ</b>							
Demand: 113-138S GOOD, OTHERS MODERATE. Market: 88S SLIGHTLY LOWER, 113-138S SLIGHTLY HIGHER. Comment: Extra services included. Varieties include Hamlin, Valencia.							
EARLY VARIETIES * No Grade Marks * 56S * 7/10 bu ctns							supplies insufficient and in too few hands to establish a market.
EARLY VARIETIES * No Grade Marks * 72S * 7/10 bu ctns							supplies insufficient and in too few hands to establish a market.
EARLY VARIETIES * No Grade Marks * 88S * 7/10 bu ctns	17.50	18.50	18.00	15.95	21.95	18.95	occasional higher
EARLY VARIETIES * No Grade Marks * 113S * 7/10 bu ctns	20.95	21.95	21.45	16.95	22.95	19.95	occasional higher
EARLY VARIETIES * No Grade Marks * 138S * 7/10 bu ctns	19.95	20.95	20.45	15.95	20.95	18.45	occasional higher



# Nogales Crossing Review

Thursday, April 18, 2024

Prices represent open (spot) market sales by first handlers on product of generally good quality & condition unless otherwise stated & may include promotional allowances or other incentives. No consideration is given to after-sale adjustments unless otherwise stated. Brokerage fees paid by the shipper are included in the price reported. Price sources are the U.S.D.A. Market News Service and other sources.

----- MOSTLY -----							
	LOW	HIGH	AVERAGE	LOW	HIGH	AVERAGE	PRICE COMMENT
<b>PEPPERS, BELL TYPE - MEXICO THRU NOGALES, AZ</b>							
Demand: 15 POUND RED FAIRLY GOOD, OTHERS MODERATE. Market: 15 POUND RED SLIGHTLY HIGHER, GREEN LARGE AND MEDIUM SLIGHTLY LOWER, OTHERS HIGHER. Comment: Extra services included. Wide range in quality and condition.							
GREEN * exlge * 1 1/9 bu ctns				14.95	16.95	15.95	occasional higher and lower
GREEN * LGE * 1 1/9 bu ctns	10.95	12.95	11.95	10.95	14.95	12.95	occasional higher
GREEN * MED * 1 1/9 bu ctns	7.95	8.95	8.45	6.95	10.95	8.95	occasional higher
GREEN * IRREG SZ * FR QUAL * 1 1/9 bu ctns	6.95	8.95	7.95	6.95	10.95	8.95	occasional higher
ORANGE * exlge * 11 lb ctns * Greenhouse	6.95	7.95	7.45	6.95	10.95	8.95	occasional higher
ORANGE * LGE * 11 lb ctns * Greenhouse	5.95	6.95	6.45	5.95	9.95	7.95	occasional higher
RED * JBO * 15 lb cartons							supplies insufficient and in too few hands to establish a market
RED * exlge * 11 lb ctns * Greenhouse	6.95	7.95	7.45	5.95	9.95	7.95	occasional higher
RED * exlge * 15 lb cartons	9.95	10.95	10.45	8.95	12.95	10.95	
RED * LGE * 11 lb ctns * Greenhouse	5.95	6.95	6.45	5.95	8.95	7.45	occasional higher
RED * LGE * 15 lb cartons	9.95	10.95	10.45	8.95	12.95	10.95	
RED * IRREG SZ * FR QUAL * 1 1/9 bu ctns				12.95	16.95	14.95	occasional higher
YELLOW * exlge * 11 lb ctns * Greenhouse	6.95	8.95	7.95	6.95	10.95	8.95	
YELLOW * LGE * 11 lb ctns * Greenhouse	5.95	7.95	6.95	5.95	9.95	7.95	occasional higher
<b>PEPPERS, OTHER - MEXICO THRU NOGALES, AZ</b>							
Demand: SERRANO AND YELLOW CHILE GOOD, OTHERS MODERATE. Market: SERRANO, YELLOW CHILE SLIGHTLY HIGHER, MINI SWEET LOWER ANAHEIM ABOUT STEADY, OTHERS SLIGHTLY LOWER. Comment: Extra services included.							
ANAHEIM * 1 1/9 bu ctns * PER LB	1.10	1.13	1.12	1.05	1.18	1.12	occasional higher
JALAPENO * 1 1/9 bu ctns * PER LB	1.05	1.11	1.08	1.00	1.16	1.08	occasional higher
MIXED MINI SWEET TYPES * cartons 12 1-lb film bags	22.95	24.95	23.95	22.95	26.95	24.95	occasional higher
POBLANO * 1 1/9 bu ctns * PER LB	1.19	1.24	1.22	1.10	1.28	1.19	few 1.35 occasional lower
SERRANO * 1 1/9 bu ctns * PER LB	1.53	1.58	1.56	1.42	1.63	1.53	occasional higher and lower
YELLOW CHILE * 1 1/9 bu ctns * PER LB	1.13	1.13	1.13	1.13	1.19	1.16	occasional higher
<b>SQUASH - MEXICO THRU NOGALES, AZ</b>							
Demand: ZUCCHINI, YELLOW AND ACORN GOOD, OTHERS MODERATE. Market: ACORN AND YELLOW MEDIUM SLIGHTLY HIGHER, OTHERS ABOUT STEADY. Comment: Extra services included.							
ACORN * LGE * 1 1/9 bu ctns				18.95	20.95	19.95	occasional higher
ACORN * MED * 1 1/9 bu ctns				16.95	18.95	17.95	occasional higher

# Nogales Crossing Review

Thursday, April 18, 2024

Prices represent open (spot) market sales by first handlers on product of generally good quality & condition unless otherwise stated & may include promotional allowances or other incentives. No consideration is given to after-sale adjustments unless otherwise stated. Brokerage fees paid by the shipper are included in the price reported. Price sources are the U.S.D.A. Market News Service and other sources.

	----- MOSTLY -----						
	LOW	HIGH	AVERAGE	LOW	HIGH	AVERAGE	PRICE COMMENT
<b>SQUASH - MEXICO THRU NOGALES, AZ</b>							
Demand: ZUCCHINI, YELLOW AND ACORN GOOD, OTHERS MODERATE. Market: ACORN AND YELLOW MEDIUM SLIGHTLY HIGHER, OTHERS ABOUT STEADY. Comment: Extra services included.							
BUTTERNUT * LGE * 1 1/9 bu ctns	12.95	12.95	12.95	10.95	14.95	12.95	occasional higher
BUTTERNUT * MED * 1 1/9 bu ctns	10.95	10.95	10.95	8.95	12.95	10.95	
BUTTERNUT * SML * 1 1/9 bu ctns	8.95	8.95	8.95	6.95	10.95	8.95	
GREY * MED * 4/7 bu ctns	8.95	8.95	8.95	6.95	10.95	8.95	
GREY * SML-MED * 4/7 bu ctns	10.95	10.95	10.95	8.95	12.95	10.95	
GREY * SML * 4/7 bu ctns	10.95	12.95	11.95	10.95	14.95	12.95	
KABOCHA * XLGE * 1 1/9 bu ctns	10.95	12.95	11.95	10.95	14.95	12.95	occasional higher
KABOCHA * LGE * 1 1/9 bu ctns	8.95	10.95	9.95	8.95	12.95	10.95	occasional higher
KABOCHA * MED * 1 1/9 bu ctns	6.95	8.95	7.95	6.95	10.95	8.95	occasional higher
SPAGHETTI * LGE * 1 1/9 bu ctns	10.95	12.95	11.95	8.95	14.95	11.95	occasional lower
SPAGHETTI * MED * 1 1/9 bu ctns	8.95	10.95	9.95	7.95	12.95	10.45	occasional higher and lower
SPAGHETTI * SML * 1 1/9 bu ctns	6.95	7.95	7.45	5.95	8.95	7.45	occasional higher
YELLOW STRAIGHTNECK * MED * 4/7 bu ctns	14.95	14.95	14.95	14.95	16.95	15.95	occasional higher
YELLOW STRAIGHTNECK * SML-MED * 4/7 bu ctns	16.95	16.95	16.95	14.95	18.95	16.95	occasional higher
YELLOW STRAIGHTNECK * SML * 4/7 bu ctns	16.95	16.95	16.95	14.95	18.95	16.95	occasional higher
ZUCCHINI * MED-LGE * 1 1/9 bu ctns	8.95	8.95	8.95	6.95	8.95	7.95	occasional higher
ZUCCHINI * MED * 4/7 bu ctns	10.95	10.95	10.95	10.95	12.95	11.95	occasional higher
ZUCCHINI * SML-MED * 4/7 bu ctns	10.95	10.95	10.95	10.95	12.95	11.95	occasional higher
ZUCCHINI * SML * 4/7 bu ctns	10.95	10.95	10.95	10.95	12.95	11.95	occasional higher
<b>TOMATILLOS - MEXICO THRU NOGALES, AZ</b>							
Demand: FAIRLY GOOD. Market: HIGHER. Comment: Extra services included.							
1 1/9 bu ctns/crts	30.00	30.00	30.00	28.00	32.00	30.00	occasional higher
<b>TOMATOES - MEXICO THRU NOGALES, AZ</b>							
Demand: GOOD. Market: ABOUT STEADY. Comment: Extra services included.							
VINE RIPES * 4X4S * cartons 2 layer	22.95	22.95	22.95	20.95	22.95	21.95	occasional higher
VINE RIPES * 4X5S * cartons 2 layer	22.95	22.95	22.95	20.95	22.95	21.95	occasional higher
VINE RIPES * 5X5 SZ * 25 lb ctns lse	22.95	22.95	22.95	20.95	22.95	21.95	occasional higher
VINE RIPES * 5X5S * cartons 2 layer	20.95	20.95	20.95	18.95	20.95	19.95	occasional higher

# Nogales Crossing Review

Thursday, April 18, 2024

Prices represent open (spot) market sales by first handlers on product of generally good quality & condition unless otherwise stated & may include promotional allowances or other incentives. No consideration is given to after-sale adjustments unless otherwise stated. Brokerage fees paid by the shipper are included in the price reported. Price sources are the U.S.D.A. Market News Service and other sources.

----- MOSTLY -----							
	LOW	HIGH	AVERAGE	LOW	HIGH	AVERAGE	PRICE COMMENT
<b>TOMATOES - MEXICO THRU NOGALES, AZ</b>							
Demand: GOOD. Market: ABOUT STEADY. Comment: Extra services included.							
VINE RIPES * 5X6 SZ * 25 lb ctns lse	22.95	22.95	22.95	20.95	22.95	21.95	occasional higher
VINE RIPES * 5X6S * cartons 2 layer	20.95	20.95	20.95	18.95	20.95	19.95	occasional higher
VINE RIPES * 4x4 sz * 25 lb ctns lse	24.95	24.95	24.95	22.95	24.95	23.95	occasional higher
VINE RIPES * 4x5 sz * 25 lb ctns lse	24.95	24.95	24.95	22.95	24.95	23.95	occasional higher
<b>TOMATOES, GRAPE TYPE - MEXICO THRU NOGALES, AZ</b>							
Demand: FAIRLY GOOD. Market: PINTS SLIGHTLY HIGHER, LOOSE ABOUT STEADY. Comment: Extra services included.							
20 lb ctns loose	12.95	14.95	13.95	11.95	14.95	13.45	
flats 12 1-pint cntnrs w/lids	6.95	7.95	7.45	5.95	7.95	6.95	
<b>TOMATOES, PLUM TYPE - MEXICO THRU NOGALES, AZ</b>							
Demand: FAIRLY GOOD AT SLIGHTLY LOWER PRICES. Market: SLIGHTLY LOWER. Comment: Extra services included.							
ROMA * exlge * 25 lb ctns lse	14.95	15.95	15.45	12.95	16.95	14.95	few 18.95
ROMA * LGE * 25 lb ctns lse	12.95	13.95	13.45	12.95	16.95	14.95	
ROMA * MED * 25 lb ctns lse	10.95	11.95	11.45	10.95	12.95	11.95	occasional higher
<b>WATERMELONS - MEXICO THRU NOGALES, AZ</b>							
Demand: MODERATE. Market: 35, 45 AND 60 COUNTS SLIGHTLY LOWER, OTHERS ABOUT STEADY. Comment: Extra services included.							
RED FLESH SEEDLESS MINIATURE * 6S * ctns	14.95	15.95	15.45	14.95	17.95	16.45	occasional higher
RED FLESH SEEDLESS MINIATURE * 8S * ctns	16.95	16.95	16.95	14.95	18.95	16.95	occasional higher
RED FLESH SEEDLESS MINIATURE * 9S * ctns	12.95	13.95	13.45	12.95	14.95	13.95	occasional higher
RED FLESH SEEDLESS TYPE * 4S * ctns	20.95	22.95	21.95	20.95	24.95	22.95	
RED FLESH SEEDLESS TYPE * 5S * ctns	20.95	22.95	21.95	20.95	24.95	22.95	
RED FLESH SEEDLESS TYPE * 6S * ctns	20.95	22.95	21.95	20.95	24.95	22.95	
RED FLESH SEEDLESS TYPE * approx 45 count * 24 in bns	182.00	198.00	190.00	175.00	220.00	197.50	occasional higher
RED FLESH SEEDLESS TYPE * approx 35 count * 24 in bns	175.00	182.00	178.50	165.00	210.00	187.50	occasional higher
RED FLESH SEEDLESS TYPE * approx 60 count * 24 in bns	182.00	198.00	190.00	175.00	220.00	197.50	occasional higher
RED FLESH SEEDLESS TYPE * 75-80s * 24 in bns							supplies in too few hands to establish a market

# Nogales Crossing Review

Friday, April 19, 2024

Prices represent open (spot) market sales by first handlers on product of generally good quality & condition unless otherwise stated & may include promotional allowances or other incentives. No consideration is given to after-sale adjustments unless otherwise stated. Brokerage fees paid by the shipper are included in the price reported. Price sources are the U.S.D.A. Market News Service and other sources.

----- MOSTLY -----							
	LOW	HIGH	AVERAGE	LOW	HIGH	AVERAGE	PRICE COMMENT
<b>BEANS - MEXICO THRU NOGALES, AZ</b>							
Demand: FAIRLY GOOD. Market: ABOUT STEADY. Comment: Extra services included.							
ROUND GREEN TYPE * HANDPICKED * 30 lb ctns	18.00	18.95	18.48	16.95	18.95	17.95	occasional higher
<b>CUCUMBERS - MEXICO THRU NOGALES, AZ</b>							
Demand: MODERATE. Market: LONG SEEDLESS SLIGHTLY HIGHER, OTHERS ABOUT STEADY. Comment: Extra services included.							
24S * ctns				5.95	6.95	6.45	occasional higher and lower
36S * ctns				6.95	8.95	7.95	occasional higher
LGE * 1 1/9 bu ctns				12.95	14.95	13.95	occasional higher and lower
MED * 1 1/9 bu ctns				14.95	16.95	15.95	
MED * FR QUAL * 1 1/9 bu ctns	10.95	11.95	11.45	8.95	12.95	10.95	occasional higher and lower
MED * ORD QUAL * 1 1/9 bu ctns				6.95	8.95	7.95	occasional higher
SML * 1 1/9 bu ctns				8.95	10.95	9.95	occasional higher and lower
LONG SEEDLESS * IRREG SZ * FR QUAL * ctns flm wrapped * Greenhouse				6.95	8.95	7.95	occasional higher
LONG SEEDLESS * med 12s * ctns flm wrapped * Greenhouse	4.95	4.95	4.95	3.95	6.95	5.45	
LONG SEEDLESS * sml 12s * ctns flm wrapped * Greenhouse	3.95	4.95	4.45	3.00	5.95	4.48	
LONG SEEDLESS * lge 12s * ctns flm wrapped * Greenhouse	4.95	4.95	4.95	3.95	6.95	5.45	
PICKLES * 150-200S * bushel & 40-45 lb plastic containers	18.00	20.00	19.00	18.00	22.00	20.00	
PICKLES * 200-300S * bushel & 40-45 lb plastic containers	20.00	22.00	21.00	20.00	24.00	22.00	
PICKLES * 300-400S * bushel & 40-45 lb plastic containers	20.00	22.00	21.00	20.00	24.00	22.00	
<b>EGGPLANT - MEXICO THRU NOGALES, AZ</b>							
Demand: 18S MODERATE, 24S LIGHT. Market: ABOUT STEADY. Comment: Extra services included.							
18S * 1 bu, 1 1/9 bu, 1 1/6 bu ctns wrapped	8.95	10.95	9.95	7.95	12.95	10.45	occasional higher and lower
18S * FR QUAL * 1 bu, 1 1/9 bu, 1 1/6 bu ctns wrapped	5.95	7.95	6.95	5.95	8.95	7.45	occasional higher
24S * 1 bu, 1 1/9 bu, 1 1/6 bu ctns wrapped	7.95	8.95	8.45	6.95	10.95	8.95	occasional higher and lower
24S * FR QUAL * 1 bu, 1 1/9 bu, 1 1/6 bu ctns wrapped	4.95	5.95	5.45	4.95	7.95	6.45	occasional higher
<b>HONEYDEWS - MEXICO THRU NOGALES, AZ</b>							
Demand: 5S MODERATE, OTHERS FAIRLY LIGHT. Market: 5S LOWER, OTHERS SLIGHTLY LOWER. Comment: Extra services included.							
2/3 cartons							
5S * 2/3 cartons	9.00	10.00	9.50	8.95	12.00	10.48	occasional higher
6S * 2/3 cartons	8.00	8.00	8.00	7.00	10.00	8.50	one label 10.95

# Nogales Crossing Review

Friday, April 19, 2024

Prices represent open (spot) market sales by first handlers on product of generally good quality & condition unless otherwise stated & may include promotional allowances or other incentives. No consideration is given to after-sale adjustments unless otherwise stated. Brokerage fees paid by the shipper are included in the price reported. Price sources are the U.S.D.A. Market News Service and other sources.

----- MOSTLY -----							
	LOW	HIGH	AVERAGE	LOW	HIGH	AVERAGE	PRICE COMMENT
<b>HONEYDEWS - MEXICO THRU NOGALES, AZ</b>							
Demand: 5S MODERATE, OTHERS FAIRLY LIGHT. Market: 5S LOWER, OTHERS SLIGHTLY LOWER. Comment: Extra services included.							
8S * 2/3 cartons	7.00	7.00	7.00	6.00	8.95	7.48	one label 9.95 occasional lower
<b>MANGOES - MEXICO THRU NOGALES, AZ</b>							
Demand: TOMMY ATKINS 12S MODERATE, OTHERS VERY GOOD. Market: ATAULFO 18-22S HIGHER, OTHERS ABOUT STEADY. Comment: Wide range in quality and condition. Supplies in few hands. Most present shipments from prior bookings and/or previous commitments. Volume includes very light supplies of Haden variety.							
ATAULFO * 14S * ctns 1 lyr							supplies insufficient and in too few hands to establish a market
ATAULFO * 16S * ctns 1 lyr				10.00	10.50	10.25	
ATAULFO * 18S * ctns 1 lyr				9.00	9.25	9.13	
ATAULFO * 20S * ctns 1 lyr				8.00	8.25	8.13	
ATAULFO * 22S * ctns 1 lyr				7.25	7.50	7.38	
TOMMY ATKINS * 7S * ctns 1 lyr				10.50	10.50	10.50	
TOMMY ATKINS * 8S * ctns 1 lyr				10.00	10.00	10.00	
TOMMY ATKINS * 9S * ctns 1 lyr				9.00	9.50	9.25	
TOMMY ATKINS * 10S * ctns 1 lyr	6.50	6.50	6.50	5.75	7.25	6.50	occasional lower
TOMMY ATKINS * 12S * ctns 1 lyr	5.50	6.00	5.75	5.50	7.00	6.25	occasional higher and lower
<b>ORANGES - MEXICO THRU NOGALES, AZ</b>							
Demand: 113-138S GOOD, OTHERS MODERATE. Market: ABOUT STEADY. Comment: Extra services included. Varieties include Hamlin, Valencia.							
EARLY VARIETIES * No Grade Marks * 56S * 7/10 bu ctns							supplies insufficient and in too few hands to establish a market.
EARLY VARIETIES * No Grade Marks * 72S * 7/10 bu ctns							supplies insufficient and in too few hands to establish a market.
EARLY VARIETIES * No Grade Marks * 88S * 7/10 bu ctns	17.50	18.50	18.00	15.95	21.95	18.95	occasional higher
EARLY VARIETIES * No Grade Marks * 113S * 7/10 bu ctns	20.95	21.95	21.45	16.95	22.95	19.95	occasional higher
EARLY VARIETIES * No Grade Marks * 138S * 7/10 bu ctns	19.95	20.95	20.45	15.95	20.95	18.45	occasional higher
<b>PEPPERS, BELL TYPE - MEXICO THRU NOGALES, AZ</b>							
Demand: MODERATE. Market: GREEN EXTRA LARGE SLIGHTLY LOWER, LARGE AND MEDIUM ABOUT STEADY, OTHERS HIGHER. Comment: Extra services included. Wide range in quality and condition.							
GREEN * exlge * 1 1/9 bu ctns				12.95	16.95	14.95	occasional higher
GREEN * LGE * 1 1/9 bu ctns	10.95	12.95	11.95	10.95	14.95	12.95	occasional higher
GREEN * MED * 1 1/9 bu ctns	7.95	8.95	8.45	6.95	10.95	8.95	occasional higher



# Nogales Crossing Review

Friday, April 19, 2024

Prices represent open (spot) market sales by first handlers on product of generally good quality & condition unless otherwise stated & may include promotional allowances or other incentives. No consideration is given to after-sale adjustments unless otherwise stated. Brokerage fees paid by the shipper are included in the price reported. Price sources are the U.S.D.A. Market News Service and other sources.

----- MOSTLY -----							
	LOW	HIGH	AVERAGE	LOW	HIGH	AVERAGE	PRICE COMMENT
<b>PEPPERS, BELL TYPE - MEXICO THRU NOGALES, AZ</b>							
Demand: MODERATE. Market: GREEN EXTRA LARGE SLIGHTLY LOWER, LARGE AND MEDIUM ABOUT STEADY, OTHERS HIGHER. Comment: Extra services included. Wide range in quality and condition.							
GREEN * IRREG SZ * FR QUAL * 1 1/9 bu ctns	6.95	8.95	7.95	6.95	10.95	8.95	occasional higher
ORANGE * exlge * 11 lb ctns * Greenhouse	8.95	8.95	8.95	6.95	10.95	8.95	few 12.95
ORANGE * LGE * 11 lb ctns * Greenhouse	6.95	8.95	7.95	6.95	10.95	8.95	occasional higher
RED * exlge * 11 lb ctns * Greenhouse	6.95	8.95	7.95	6.95	10.95	8.95	occasional higher
RED * exlge * 15 lb cartons	10.95	10.95	10.95	8.95	12.95	10.95	
RED * LGE * 11 lb ctns * Greenhouse	6.95	7.95	7.45	6.95	10.95	8.95	
RED * LGE * 15 lb cartons	10.95	10.95	10.95	8.95	12.95	10.95	
RED * IRREG SZ * FR QUAL * 1 1/9 bu ctns				12.95	16.95	14.95	occasional higher
YELLOW * exlge * 11 lb ctns * Greenhouse				8.95	10.95	9.95	few 12.95
YELLOW * LGE * 11 lb ctns * Greenhouse	7.95	9.95	8.95	7.95	10.95	9.45	occasional higher
<b>PEPPERS, OTHER - MEXICO THRU NOGALES, AZ</b>							
Demand: GOOD. Market: MINI SWEETS AND YELLOW CHILE ABOUT STEADY, OTHERS SLIGHTLY HIGHER. Comment: Extra services included.							
ANAHEIM * 1 1/9 bu ctns * PER LB	1.13	1.17	1.15	1.09	1.25	1.17	occasional lower
JALAPENO * 1 1/9 bu ctns * PER LB	1.11	1.11	1.11	0.95	1.16	1.06	occasional lower
MIXED MINI SWEET TYPES * cartons 12 1-lb film bags	22.95	24.95	23.95	22.95	26.95	24.95	occasional higher
POBLANO * 1 1/9 bu ctns * PER LB	1.24	1.28	1.26	1.19	1.38	1.29	occasional higher
SERRANO * 1 1/9 bu ctns * PER LB	1.58	1.63	1.61	1.48	1.69	1.59	one label 1.85 occasional lower
YELLOW CHILE * 1 1/9 bu ctns * PER LB	1.13	1.13	1.13	1.13	1.19	1.16	occasional higher
<b>SQUASH - MEXICO THRU NOGALES, AZ</b>							
Demand: ZUCCHINI, YELLOW AND ACORN GOOD, OTHERS MODERATE. Market: ABOUT STEADY. Comment: Extra services included.							
ACORN * LGE * 1 1/9 bu ctns				18.95	20.95	19.95	occasional higher
ACORN * MED * 1 1/9 bu ctns				16.95	18.95	17.95	occasional higher
BUTTERNUT * LGE * 1 1/9 bu ctns	12.95	12.95	12.95	10.95	14.95	12.95	occasional higher
BUTTERNUT * MED * 1 1/9 bu ctns	10.95	10.95	10.95	8.95	12.95	10.95	
BUTTERNUT * SML * 1 1/9 bu ctns	8.95	8.95	8.95	6.95	10.95	8.95	
GREY * MED * 4/7 bu ctns	8.95	8.95	8.95	7.95	10.95	9.45	few 12.95
GREY * SML-MED * 4/7 bu ctns	10.95	10.95	10.95	8.95	12.95	10.95	occasional higher
GREY * SML * 4/7 bu ctns	10.95	12.95	11.95	10.95	14.95	12.95	

# Nogales Crossing Review

Friday, April 19, 2024

Prices represent open (spot) market sales by first handlers on product of generally good quality & condition unless otherwise stated & may include promotional allowances or other incentives. No consideration is given to after-sale adjustments unless otherwise stated. Brokerage fees paid by the shipper are included in the price reported. Price sources are the U.S.D.A. Market News Service and other sources.

----- MOSTLY -----							
	LOW	HIGH	AVERAGE	LOW	HIGH	AVERAGE	PRICE COMMENT
<b>SQUASH - MEXICO THRU NOGALES, AZ</b>							
Demand: ZUCCHINI, YELLOW AND ACORN GOOD, OTHERS MODERATE. Market: ABOUT STEADY. Comment: Extra services included.							
KABOCHA * XLGE * 1 1/9 bu ctns	10.95	12.95	11.95	10.95	14.95	12.95	occasional higher
KABOCHA * LGE * 1 1/9 bu ctns	8.95	10.95	9.95	8.95	12.95	10.95	occasional higher
KABOCHA * MED * 1 1/9 bu ctns	6.95	8.95	7.95	6.95	10.95	8.95	occasional higher
SPAGHETTI * LGE * 1 1/9 bu ctns	10.95	12.95	11.95	8.95	14.95	11.95	occasional lower
SPAGHETTI * MED * 1 1/9 bu ctns	8.95	10.95	9.95	7.95	12.95	10.45	occasional higher and lower
SPAGHETTI * SML * 1 1/9 bu ctns	6.95	7.95	7.45	5.95	8.95	7.45	occasional higher
YELLOW STRAIGHTNECK * MED * 4/7 bu ctns	14.95	14.95	14.95	12.95	14.95	13.95	occasional higher
YELLOW STRAIGHTNECK * SML-MED * 4/7 bu ctns	16.95	16.95	16.95	14.95	18.95	16.95	occasional higher
YELLOW STRAIGHTNECK * SML * 4/7 bu ctns	16.95	16.95	16.95	14.95	18.95	16.95	occasional higher
ZUCCHINI * MED-LGE * 1 1/9 bu ctns	8.95	8.95	8.95	6.95	8.95	7.95	occasional higher
ZUCCHINI * MED * 4/7 bu ctns	10.95	10.95	10.95	10.95	12.95	11.95	occasional higher
ZUCCHINI * SML-MED * 4/7 bu ctns	10.95	10.95	10.95	10.95	12.95	11.95	occasional higher
ZUCCHINI * SML * 4/7 bu ctns	10.95	10.95	10.95	10.95	12.95	11.95	occasional higher
<b>TOMATILLOS - MEXICO THRU NOGALES, AZ</b>							
Demand: FAIRLY GOOD. Market: SLIGHTLY HIGHER. Comment: Extra services included.							
1 1/9 bu ctns/crts				30.00	32.00	31.00	occasional higher
<b>TOMATOES - MEXICO THRU NOGALES, AZ</b>							
Demand: GOOD. Market: 4X4-4X5 SIZES AND 4X4-4X5S ABOUT STEADY, OTHERS SLIGHTLY HIGHER. Comment: Extra services included.							
VINE RIPES * 4X4S * cartons 2 layer	22.95	22.95	22.95	20.95	22.95	21.95	occasional higher
VINE RIPES * 4X5S * cartons 2 layer	22.95	22.95	22.95	20.95	22.95	21.95	occasional higher
VINE RIPES * 5X5 SZ * 25 lb ctns lse				22.95	24.95	23.95	occasional higher
VINE RIPES * 5X5S * cartons 2 layer				20.95	22.95	21.95	occasional higher
VINE RIPES * 5X6 SZ * 25 lb ctns lse				22.95	24.95	23.95	occasional higher
VINE RIPES * 5X6S * cartons 2 layer				20.95	22.95	21.95	occasional higher
VINE RIPES * 4x4 sz * 25 lb ctns lse	24.95	24.95	24.95	22.95	24.95	23.95	occasional higher
VINE RIPES * 4x5 sz * 25 lb ctns lse	24.95	24.95	24.95	22.95	24.95	23.95	occasional higher

# Nogales Crossing Review

Friday, April 19, 2024

Prices represent open (spot) market sales by first handlers on product of generally good quality & condition unless otherwise stated & may include promotional allowances or other incentives. No consideration is given to after-sale adjustments unless otherwise stated. Brokerage fees paid by the shipper are included in the price reported. Price sources are the U.S.D.A. Market News Service and other sources.

----- MOSTLY -----							
	LOW	HIGH	AVERAGE	LOW	HIGH	AVERAGE	PRICE COMMENT
<b>TOMATOES, GRAPE TYPE - MEXICO THRU NOGALES, AZ</b>							
Demand: GOOD. Market: ABOUT STEADY. Comment: Extra services included.							
20 lb ctns loose				12.95	14.95	13.95	occasional higher and lower
flats 12 1-pint cntnrs w/lids	6.95	7.95	7.45	5.95	7.95	6.95	
<b>TOMATOES, PLUM TYPE - MEXICO THRU NOGALES, AZ</b>							
Demand: GOOD. Market: SLIGHTLY HIGHER. Comment: Extra services included.							
ROMA * exlge * 25 lb ctns lse	16.95	16.95	16.95	14.95	18.95	16.95	occasional higher
ROMA * LGE * 25 lb ctns lse	14.95	14.95	14.95	12.95	16.95	14.95	occasional higher
ROMA * MED * 25 lb ctns lse	12.95	12.95	12.95	10.95	14.95	12.95	
<b>WATERMELONS - MEXICO THRU NOGALES, AZ</b>							
Demand: MODERATE. Market: MINIATURE 8S LOWER, 6S AND 9S SLIGHTLY LOWER, OTHERS SLIGHTLY HIGHER. Comment: Extra services included.							
RED FLESH SEEDLESS MINIATURE * 6S * ctns	13.95	13.95	13.95	13.95	15.95	14.95	occasional higher
RED FLESH SEEDLESS MINIATURE * 8S * ctns	13.95	14.95	14.45	13.95	15.95	14.95	occasional higher
RED FLESH SEEDLESS MINIATURE * 9S * ctns	12.95	12.95	12.95	12.95	14.95	13.95	occasional higher
RED FLESH SEEDLESS TYPE * 4S * ctns	22.95	22.95	22.95	20.95	24.95	22.95	
RED FLESH SEEDLESS TYPE * 5S * ctns	22.95	22.95	22.95	20.95	24.95	22.95	
RED FLESH SEEDLESS TYPE * 6S * ctns	22.95	22.95	22.95	20.95	24.95	22.95	
RED FLESH SEEDLESS TYPE * approx 45 count * 24 in bns	189.00	210.00	199.50	182.00	224.00	203.00	occasional higher
RED FLESH SEEDLESS TYPE * approx 35 count * 24 in bns	182.00	189.00	185.50	175.00	210.00	192.50	occasional higher and lower
RED FLESH SEEDLESS TYPE * approx 60 count * 24 in bns	198.00	203.00	200.50	182.00	224.00	203.00	occasional higher
RED FLESH SEEDLESS TYPE * 75-80s * 24 in bns	140.00	140.00	140.00	130.00	160.00	145.00	occasional higher